

Norfolk Homes: Fosdick Glen of Saline

4



The Chesterfield Plan is a contemporary two-story home featuring just under 3,000 sq. ft. of living space, 4 bedrooms and 3.5 baths. The first floor home office is set apart from the main living space, which encompasses a massive kitchen, dining space and great room. The second floor private primary suite showcases two walk-in closets and a large ensuite bath. The second bedroom has an ensuite bath, and the two remaining bedrooms share an attached bath. With endless options to customize this plan, it isn't surprising the Chesterfield has become the dream home for so many of our clients.

THE MODEL HOME FEATURES:

- Screened in deck
- Finished lower level includes rec room with wet bar, bedroom & full bath
- Grande shower in primary bath
- Gourmet Plus kitchen layout with 10' island
- 3 Car Garage

ABOUT THE COMMUNITY

Fosdick Glen of Saline is the newest single-family community for Norfolk Homes. This land preservation community has 34 acres of open space, and just 2.5 miles from charming downtown Saline. Saline offers beautiful parks and trails, quaint shops and restaurants as well as a school district ranked among the 10 best school districts in Michigan. And with Ann Arbor just a short 8 miles away, it's easy to enjoy everything the city has to offer.

**4841 Burton Lane
Saline, MI 48176**



Fosdick Glen is located on the south side of Bemis Road between Moon and Fosdick Roads.

(This model was previously open in 2023).

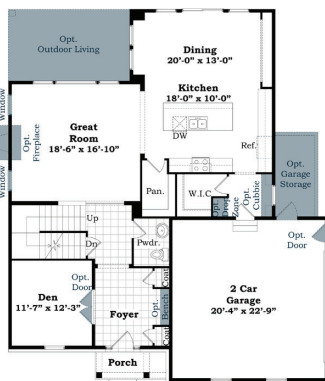


Scan for details!

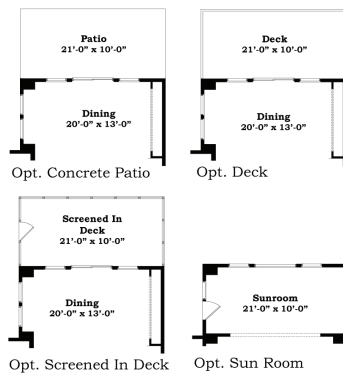
Norfolk
HOMES
Building Dreams, One Home At A Time

(734) 408-4433

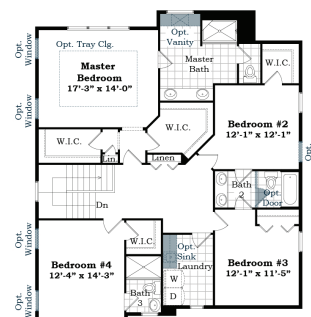
www.norfolk-homes.com



First Floor



First Floor Options



Second Floor