

# Main Street Homes

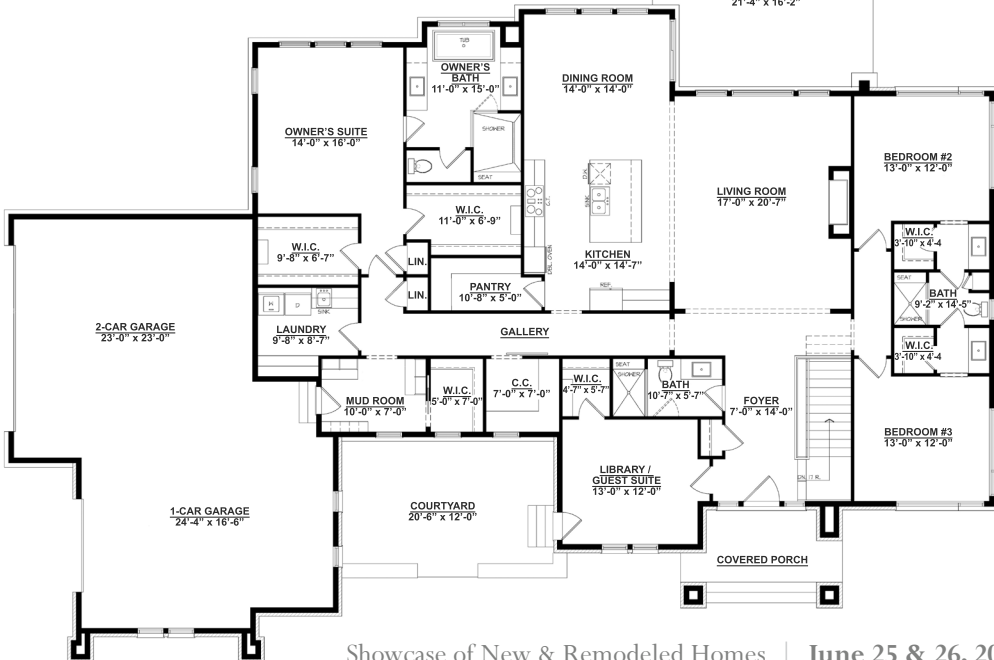
## Contemporary Prairie Style Ranch

5



**IN-PERSON TOURS: Saturday & Sunday 11-5pm (6/25 & 6/26)**

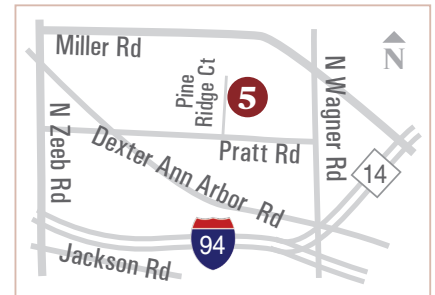
As you follow the roadways into a picturesque neighborhood, you will be welcomed home to our contemporary prairie-style ranch that features a front courtyard. The home offers an open-concept floor plan with 3 bedrooms and 3 full bathrooms. A spacious foyer welcomes your friends and family and draws your attention across the beautiful hardwood floors to the peaceful views coming from the rear windows. The library can be used as an office or a secondary bedroom, with a private entrance to the spacious courtyard. The living room features 12-foot ceilings and a linear gas fireplace with a custom surround. The kitchen's impeccable finishes, including beautiful custom cabinetry, high-end plumbing fixtures and faucets, black hardware, and indestructible Dekton countertops highlight the Subzero & Wolf appliances. From the dining room, you have access to the loggia and backyard. The loggia features a built-in grill and firepit, making it the perfect place to relax and entertain on those beautiful Michigan summer evenings. The owner's suite offers wonderful natural light, spacious dual closets and vanities, and a free-standing tub. The mudroom features custom built-ins with a walk-in closet. It leads out to an oversized three-car garage. The large unfinished lower level has 10-foot ceilings and plumbing prepped to bring your own vision to life.



*Available for summer occupancy.  
Move-in ready!*

**1036 Pine Ridge Court**  
**Ann Arbor, MI 48103**  
*Pine Ridge Estates*

3,045 Sq. Ft. | 3 Bed, 3 Bath



Pine Ridge is located off Pratt Road between Wagner Rd and Dexter Rd.

**Main Street**  
**HOMES**

(734) 660-0452

[www.MainStreet-Homes.com](http://www.MainStreet-Homes.com)