

Pulte Homes: Pittsfield Glen

8



 **IN-PERSON TOURS Friday, Saturday & Sunday 12-6pm (10/15-10/17)**

The Woodside at Pittsfield Glen features an open-flow layout, ideal for entertaining. The formal dining room with butler's pantry runs into the kitchen, with a casual dining café and soaring two-story gathering room open to the second floor. A den located near the back of the home offers privacy, while a front flex room provides space for an office or playroom. The luxurious Owner's Suite with bath offers a spa-like retreat.

Pittsfield Glen features beautiful Life-Tested® new construction 1-story and 2-story homes, minutes from the heart of downtown Ann Arbor. Enjoy nearby shopping, dining, entertainment, and an abundance of recreational activities. Your children will attend highly desired Ann Arbor Schools, and you will live just minutes from major expressways, providing easy access to the metro Detroit area.

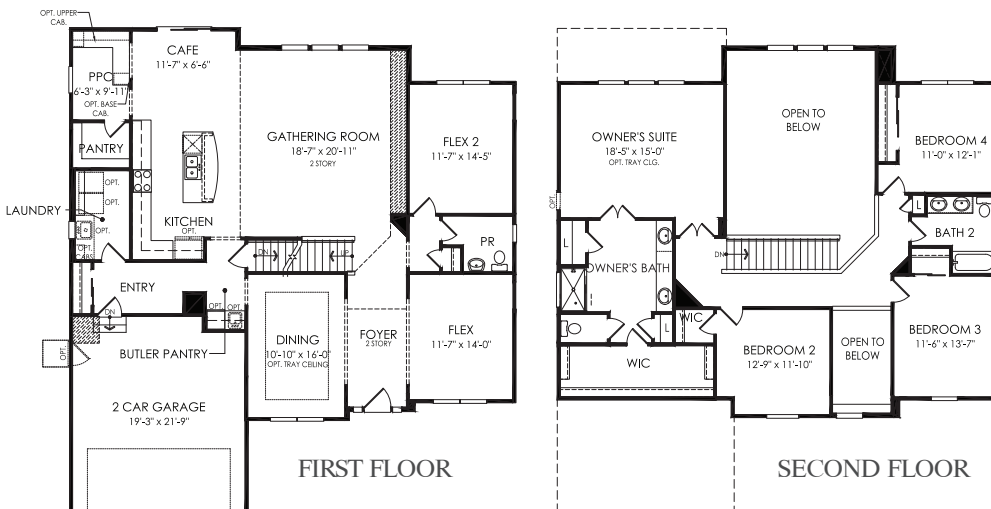
2952 Timber Glen Drive, Ann Arbor (Woodside model)

Two-story with open concept design and flexible living space

3,277 Sq. Ft. | 4 Bed, 3.5 Bath | \$719,250



Take US-23 to the south/westbound Michigan Avenue exit. Turn right onto Textile Road. Turn right again onto Platt Road. Turn left onto Timber Glen Drive. The home will be on your left.



Scan for details



(734) 547-6825
www.pulte.com