

# Pulte Homes: Grandview Estates

7

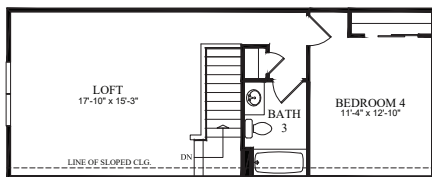
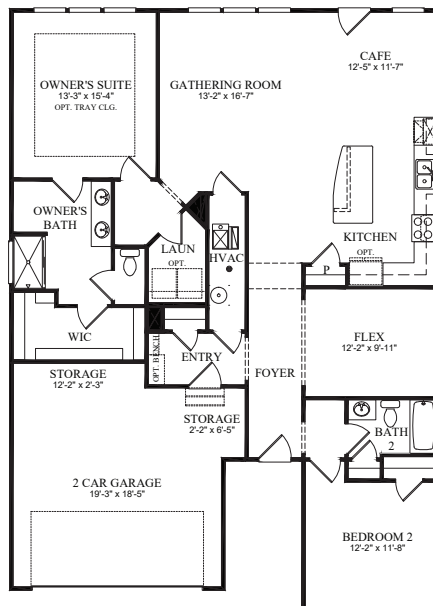


**IN-PERSON TOURS Friday, Saturday & Sunday 12-6pm (10/15-10/17)**

Those who value flow and function love the open layout of the single-story (with loft option available) Abbeyville new home floor plan. A well-integrated kitchen, dining area, and gathering room – filled with natural light – support entertaining and everyday living. An adjacent flex room serves as an office or cozy den. The Owner's Suite with walk-in closet looks onto the backyard. A full guest suite resides at the front of the home.

Enjoy low-maintenance living in the picturesque community of Grandview Estates in Canton, by new home builder Pulte Homes. Discover thoughtful new construction ranch homes with open home designs, perfect for entertaining and everyday life. Extending beyond your front door, mowing and shoveling will become activities of the past. Spend your free time exploring Metro Detroit, traveling without worry, or simply enjoying your new home.

FIRST FLOOR



OPTIONAL SECOND FLOOR PLAN WITH BASEMENT

**49420 Mapleton, Canton, MI 48188 (Abbeyville model)**

*Ranch with optional second floor loft with bedroom and bathroom*

1,857 Sq. Ft. | 2 Bed, 2 Bath | \$483,410



Take I-94 to exit 190/Belleville Rd. Head north on Belleville Rd. for 2.1 miles. Turn left (west) onto Ecorse Rd. Turn right (north) on Denton Rd. Grandview Estates will be on your left.



Scan for details



(734) 292-8708  
www.pulte.com