

Arbor Farms Development LLC

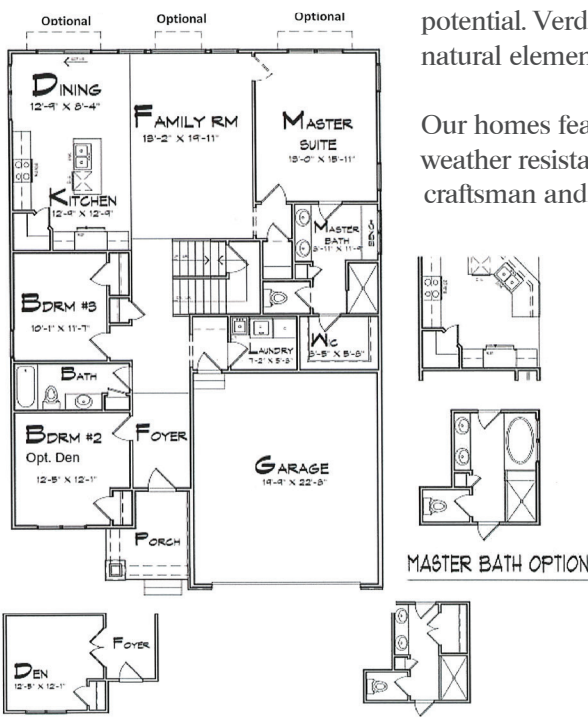
4



IN-PERSON TOURS Friday, Saturday & Sunday 12-6pm

The Hartford Ranch is a 2,427 SF, 4 bedroom, 3 bath home in an inviting community. This home features a master suite on the first floor and an upstairs bedroom with another full bath. Craftsman and Modern Farm elevations are available. Three car garages available on limited lots. The layout features 9 foot ceilings, 3 bedrooms and 2 full baths on the first floor, first floor laundry AND an additional master bedroom and fullbath with spacious loft area on the second floor. Beautiful open kitchen/dining/great room floor plan. Upstairs is a finished second floor loft, another bedroom, and another full bath. This home also includes a spacious basement offering plenty of potential. Verdant greenery and trees add a peaceful natural element throughout the quiet neighborhood.

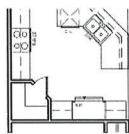
+  **Virtual Tour Online**
showcaseofhomes.net



DEN OPTION

MASTER BATH OPTION

Our homes feature an eye-catching combination of weather resistant vinyl and stonework, with a timeless craftsman and modern farm style. Crisp, white trim adds dimension to the façade of each home for a polished finish. Experience the comforts of open living and the benefits of cutting-edge design. Our homes are created with the whole family in mind, so you can make wonderful memories in a setting perfect for you and your loved ones.



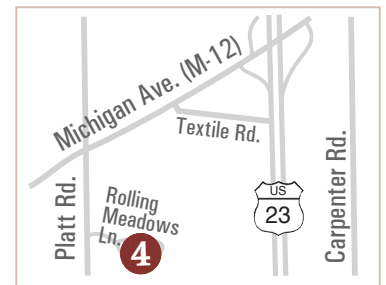
MASTER BATH OPTION



LOFT /
GAME RM
15'-8" X 22'-4"

**4232 Rolling Meadow Lane
Pittsfield Twp., MI 48197**
Ann Arbor Schools

2,427 SF | 4 Bedroom | 3 Bath
From \$374,990
*Optional 3 car garage pictured.



Enter from Platt Road, south of Michigan Ave.

As required, entry may require masks and limit access to 10 guests inside at once.



(734) 968-9025
www.arborfarmsmi.com