

PARADE OF HOMES 2019

June 21-23

Friday 12 - 7 | Saturday & Sunday 12 - 5



Tour 12 Spectacular New Homes



BUILDERS &
REMODELERS
ASSOCIATION
OF GREATER
ANN ARBOR



HOME BUILDERS ASSOCIATION
OF LIVINGSTON COUNTY



MERILLAT CABINETRY

Kitchen Design by Stan Kowal, KSI for Norfolk Homes,
Photo courtesy of Norfolk Homes

#5

Visit our kitchen in the Parade of Homes

102 Campolina Street
Chelsea, MI

Creating
Spaces in
the Home
People
will Love

From full-scale renovations of kitchens and baths to wet bars and laundry rooms, KSI delivers best-in-class design concepts and products to homeowners and trade professionals. You imagine it, and we will create it.

Visit our Brighton Design Center at 6680 Whitmore Lake Rd. (810) 220-8730
Ann Arbor Design Center at 3365 Washtenaw Ave. #H (734) 769-7669

Builder Sales (810) 229-9554

KSi

Your home. By design. For life.



Locations in:

Ann Arbor | Birmingham | Brighton | Livonia | Macomb | Toledo, OH | Lima, OH

Ann Arbor – Luxury Lives Here



Kensington Woods

- Final Opportunities now available
- Nationally-acclaimed Ann Arbor schools
- Walkout basements with beautiful wooded views still available
- Spacious first-floor master designs
- Low-maintenance living just minutes from the heart of Ann Arbor

Luxury villas from the upper \$400s

Tours by appointment only

Open House Every Saturday & Sunday, Noon-5 pm

2680 Scio Church Road, Ann Arbor, MI 48103
(734) 224-6686

NORTH OAKS

ANN ARBOR

- Resort-style amenities include clubhouse, state-of-the-art fitness center, two pools, entertaining rooms and more
- Prestigious Ann Arbor School District, walk to Elementary and Middle Schools
- Convenient location—only minutes from downtown Ann Arbor & University of Michigan
- An easy low-maintenance lifestyle with landscaping and snow removal included

Luxury townhomes from the upper \$300s Luxury villas from the low \$500s

3379 Nixon Road, Ann Arbor, MI 48105
(734) 224-6686

TRAILWOODS

OF ANN ARBOR

- Brand new open-concept designs including first-floor master options
- Oversized, cul-de-sac home sites available in the Parkside Collection
- Ann Arbor mailing address, Ann Arbor schools, low Scio Twp. taxes, and city water & sewer
- Minutes from all the conveniences you need - schools, parks, shopping, restaurants, and more
- Exceptional location with quick access to I-94

Luxury single-family homes

**The Village Collection from the upper \$300s
The Parkside Collection from the upper \$400s**

229 S. Staebler Road, Ann Arbor, MI 48103
(734) 995-5503

Visit TollBrothersAnnArbor.com/Parade



Canton • Trenton • Ann Arbor

Family Operated Since 1900

The Number One
Trex
Dealer



More Than Just Lumber...

Kitchens • Cabinets • Doors • Windows • Flooring • Millwork • Moulding



ANN ARBOR'S FINEST LUXURY HOMES

Pine Ridge Estates is Ann Arbor's newest luxury development of distinctive, custom-built homes. Located just minutes from downtown Ann Arbor, on a private cul-de-sac surrounded by towering pine trees, Pine Ridge Estates offers affluent living in a serene country setting. Nearby you will find a multitude of shopping and dining experiences and easy access to I-94 and M-14 for easy commuting.

Pine Ridge Estates is exclusively designed and built by **Main Street Homes**, the local leader in superior residential construction. With meticulous attention to detail, Main Street Homes delivers unparalleled service, quality, and craftsmanship while creating the home of your dreams.

- An intimate community of 12 one acre+ home sites
- Ann Arbor mailing address & low Scio Township taxes
- Located just west of Wagner Road off of Pratt Road
- Nationally recognized Ann Arbor schools
- Custom homes on your building site or ours
- Building in Ann Arbor, Dexter, Saline, Northville Township, and surrounding areas





Tyvek.

BE SURE YOUR NEW HOME
GETS THE QUALITY
PROTECTION IT DESERVES.



IF IT DOESN'T SAY TYVEK®, *IT ISN'T!* *All housewraps were not created equal.*

Tyvek® performs . . . Providing superior protection against air and bulk water penetration.

Tyvek® breathes . . . Moisture vapor can pass through to allow drying and help prevent damage.

Tyvek® protects . . . As it has no holes like others have . . . and is backed by a full DuPont Weatherization System 10-Year Limited Warranty for product AND labor.

Tyvek® adds real value . . . By reducing home energy costs through control of air flow and helping insulation work better.

Tyvek® means trust . . . DuPont is a 200-year-old science company, and pioneered the housewrap category over 35 years ago. There's a reason more than 5 million homes have been wrapped in Tyvek®!

For all your new construction and remodeling/residing projects, the difference is DuPont™ Tyvek®.
Visit weatherization.tyvek.com for more information.

Count on Hansen's highly trained Tyvek® Specialists to provide product information, technical support and installation assistance. Call now!

Distributed by:



**Hansen
Marketing
Services
Inc.**

800-552-4877

UNIVERSITY OF MICHIGAN CREDIT UNION

Whether you are buying a new home or remodeling your current home, let the only locally based credit union in Ann Arbor help you with your **home equity** and **mortgage!**

VISIT [UMCU.ORG](https://umcu.org)



EQUAL HOUSING
OPPORTUNITY

NMLS# 712343

Insured by NCUA

PARADE OF HOMES

June 21-23

FRIDAY 12 - 7
SATURDAY & SUNDAY 12 - 5

Tickets will be sold at each home, and include admission to all homes during the event. \$10 per person, ages 16 & under are free.

For more details,
call or visit our websites:



WASHTENAW COUNTY
BRAGAnnArbor.com
734-996-0100



LIVINGSTON COUNTY
HBALC.com
810-227-6210



FEATURED ON THE COVER

Builder: Norfolk Homes
Westchester Farms, Chelsea, MI



1 Allen Edwin Homes
Oak Grove Meadows
3260 Hill Hollow Lane, Howell

Page

11



2 Norfolk Homes
Mystic Ridge
5301 Marshland Court, Hamburg Twp.

13



3 Guenther Homes
Hartman Farms
5816 Sterling Trail, Dexter

15



4 Greystone Custom Builders
Greystone of Chelsea
800 Greystone Drive, Chelsea

17



5 Norfolk Homes
Westchester Farms
102 Campolina Street, Chelsea

19



6 Toll Brothers
Trailwoods of Ann Arbor
6383 North Trailwoods Drive, Ann Arbor
GPS: 229 S. Staebler Road, Ann Arbor

21



7 Norfolk Homes
Preserve of Dexter
4454 Lake Vista Drive, Dexter

23



8 Norfolk Homes
Cornwell Farms
1002 Cornwell St., Ann Arbor
GPS: Cornwell Farms by Norfolk Homes

25



9 Toll Brothers
North Oaks (The Vanleer)
3229 Ardley Ave, Ann Arbor
GPS: 3379 Nixon Road

27



10 Toll Brothers
North Oaks (The Bethesda)
3233 Ardley Ave, Ann Arbor
GPS: 3372 Nixon Road

29



11 Meadowlark Design+Build
1242 Arlington Blvd, Ann Arbor

31



12 Guenther Homes
Saline Valley Farms
10308 Cobb Hollow Farm Rd, Saline

33

SPONSORED BY



Ann Arbor Observer



THE ANN ARBOR NEWS
mlive.com

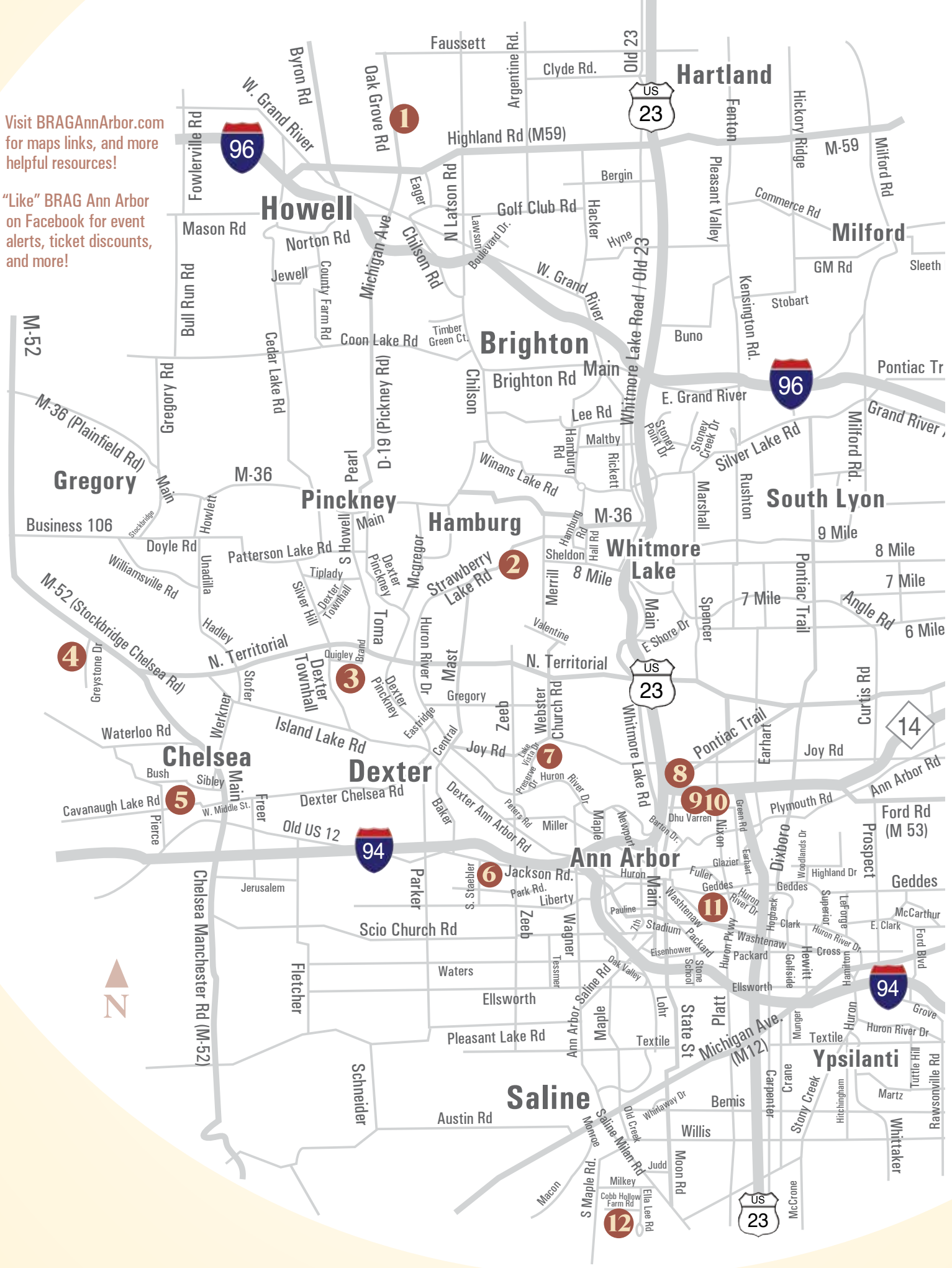
THE SUN TIMES NEWS

LIVINGSTON COUNTY DAILY
PRESS & ARGUS

Marketeer

Visit BRAGAnnArbor.com for maps links, and more helpful resources!

"Like" BRAG Ann Arbor on Facebook for event alerts, ticket discounts, and more!



Giraffe



Inspired Design. Excellent Craftsmanship. Delighting People & Planet.

giraffedesignbuild.com  info@giraffedesignbuild.com  734.489.1924

1 Allen Edwin Homes



3260 HILL HOLLOW LANE, HOWELL | *Oak Grove Meadows*

Welcome to the Elements 2390 in Oak Grove Meadows. This traditional two story home presented by Allen Edwin Homes features over 2,390 square foot of living space, 4 bedrooms and 2.5 baths. Spend time relaxing or entertaining in the great room which opens into a large dining area and gorgeous kitchen equipped with a large island, castled cabinetry and granite counters. Need a quiet space to work or study? The first floor den with glass French doors is the perfect multi-functional room. This home also features an abundance of storage space – from the walk in kitchen pantry to the built in bench in the mudroom, there is plenty of room to pack, organize and store all of your household supplies. Check out the cute powder room, which is conveniently located for guest use.

The second floor includes 3 spacious bedrooms, one of which boasts a large walk in closet, and a beautiful master suite. The master bedroom is generously sized and includes a private spa inspired bath plus a huge walk in closet. The laundry room is conveniently located on the second floor along with a full bath. There is also a fully finished basement showcasing the endless possibilities this floor plan has to offer. With so much attention to detail and thoughtful design, this home is sure to please!

ABOUT ALLEN EDWIN HOMES

Allen Edwin Homes is proud to have over 25 years of experience building homes in Michigan. We have been ranked among the nation's top 100 home building companies by BUILDER Magazine for eight consecutive years. Whether you are interested in building new or finding a new move in ready home, let our knowledge and expertise work for you.



*From I96 to Exit 133 Business 196 (M-59/Highland Rd). East to the City of Howell. Turn Left (North) on Oak Grove Road. North for about 1.5 miles to community on right.
Latitude: 42.646433
Longitude: -83.93512*



(269) 321-2600
AllenEdwin.com



DTE

LIVE LARGE WITH NATURAL GAS.

Take your living space outdoors with clean, reliable energy. From grilling to decorative lighting, fire pits to swimming pool heaters, natural gas makes it possible to enjoy outdoor spaces longer.

Find out all the ways at dteenergy.com/gashouse.

Extend your favorite Michigan season.

Nothing says summer like a warm night outside with burgers on the grill, cooking s'mores over a fire and enjoying a swim or a soak in a pool or hot tub at just the right temperature.

What you may not realize is that there's an easy way to make all those things possible using the same fuel that warms your house and cooks your food in the winter: natural gas.

Fire pits and outdoor fireplaces are increasingly popular ways to create a focal point when enjoying a deck or patio, but traditional wood-burning pits and fireplaces generate smoke and ash that require cleaning and constant tending. A natural gas fireplace or fire pit, however, starts and stops at the push of a button

and burns just as cleanly as the burners on your stove.

Natural gas can also power outdoor lighting for a soft, warm glow to make your outdoor space more inviting. Whether it's for looks, for light or for toasting marshmallows, natural gas lights, and a fire pit or fireplace makes your outdoor space more inviting.

Not only is natural gas perfect to enhance your outdoor living area, it's also more economical – costing 30 to 50 percent less than other energy sources. Plus, it's environmentally friendly and the cleanest naturally occurring energy source.

So make your Michigan summer extend further into fall, and begin sooner in spring with natural gas!



2 Norfolk Homes

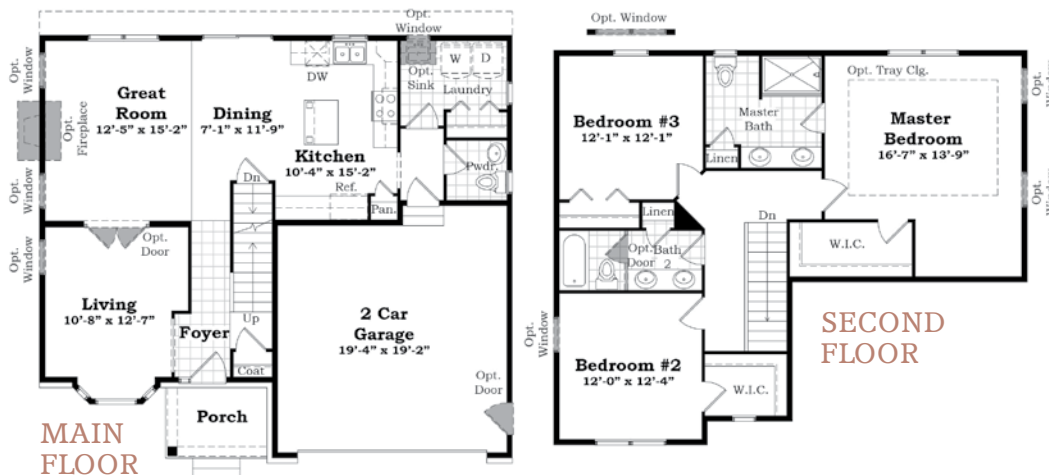


5301 MARSHLAND COURT, HAMBURG TWP. | *Mystic Ridge*

The Davenport Plan at Mystic Ridge in Hamburg (Dexter Schools) has been a popular plan for the past 20 years. The recently enhanced interior and exterior by architect Todd Hallett of TK Design and Associates showcases an updated Urban Farmhouse Elevation and maximizes usable square footage in the home. This 3 bedroom, 2.5 bath home lives much larger than its 1919 square feet. Enter the serene Mystic Ridge community through tree-lined roads and 183 acres of preserved natural land with walking trails, athletic fields and a park-like setting with mature trees. The balance of being in a country setting but close to shopping, dining, and recreation is the perfect mix for busy lifestyles. Choose from 15 cutting edge new home designs including ranch, first floor master and two-story styles. Design your Dream Home at Norfolk's Design Studio located on Jackson Road in Ann Arbor, where you will learn about product offerings and current design trends.

ABOUT THE BUILDER

Norfolk Homes was founded 27 years ago with one goal in mind: to build beautiful distinctive homes with character. Today, we continue that tradition of building homes with designs that represent the best in aesthetics, form and function. Our unique collection of homes and communities extends throughout Southeast Michigan. We recognize that building a home for someone is both a privilege and a responsibility. Your home is more than just a financial investment; it is an intricate part of who you are. We would be honored to build your dream home.



From the North: Take US-23 south to the M-36 exit. Head west on M-36. Keep left onto Hamburg Rd. Turn right onto Strawberry Lake Road. Turn left onto Sanctuary Ridge. Turn right onto Seney Circle. Turn left onto Marshland Ct.

From the South: Take US-23 north to the 8 Mile Rd exit. Head west on 8 Mile Rd. Stay on Hamburg Rd./Hall/Sheldon. Turn right onto Hamburg Rd. Turn left onto Strawberry Lake Rd. Turn left onto Sanctuary Ridge. Turn right onto Seney Circle. Turn left onto Marshland Ct.

Norfolk
 HOMES
 Building Dreams, One Home At A Time

(734) 707-9977
 Norfolk-Homes.com



Ann Arbor State Bank

The Personal Bank



Create your dream home with local bankers
in Construction & Renovation loans.

Your local construction lending expert.

Jeremy Shaffer

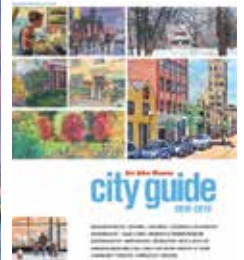
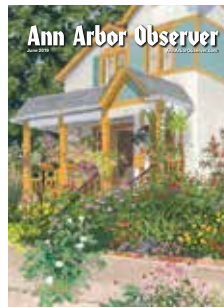
NMLS #583134

(734) 418-0583

jshaffer@a2sb.com



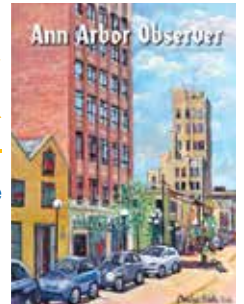
a2sb.com



a2tix

Local tickets. One place.

Subscribe to TicketWire
and receive updates
for local events!



Support Local Journalism

Here's how you can help:

- Patronize Observer advertisers
- Become an Observer friend
- Post events on AnnArborObserver.com
 - Subscribe to **TicketWire**
- Post events and buy tickets on a2tix

Ann Arbor Observer

734.769.3175

AnnArborObserver.com | a2tix.com

IDC

HEATING & COOLING

FAST, FRIENDLY HVAC SERVICES!

Call IDC to schedule your next
HVAC service appointment

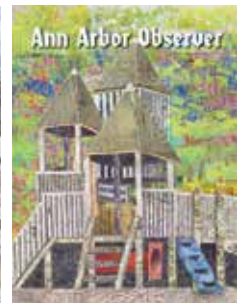
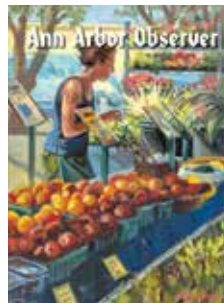
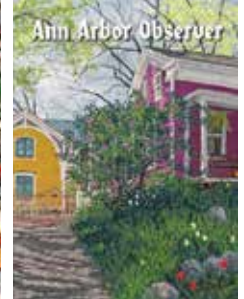
We proudly use

Amana
Heating & Air Conditioning
LASTS AND LASTS AND LASTS.

See our
work in Guenther
Homes #3 & #12
on the Parade!

idc-hvac.com
734-727-0223

Licensed and Insured · Serving Southeast Michigan Since 1990



3 Guenther Building Company - Hartman Farms



5816 STERLING TRAIL, DEXTER TOWNSHIP, 48130

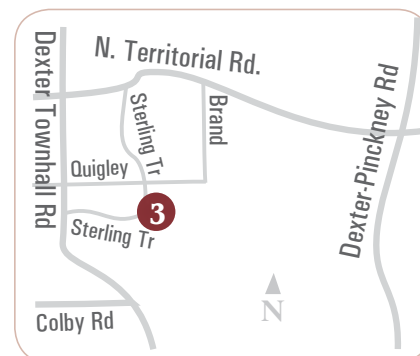
The LaGrande by Guenther Homes is one of our most popular floor plans and it's easy to see why! Let's just say "You have to see this master bathroom!" Walk through shower with a jetted tub and double vanities. A HUGE walk-in closet. Also featuring a guest room with private bath and walk-in closet as well as a Jack and Jill bath for the remaining two bedrooms. Two story foyer with bridge across. Finished walkout basement with two more bedrooms and a full bath! Much, much more!

The LaGrande Model Home features:

- 3450 Square feet plus finished walkout basement
- 6 bedrooms
- 4.5 bathrooms
- Gourmet Kitchen
- Granite countertops
- Gorgeous hardwood and tile flooring
- Amazing master suite with walk-through spa shower

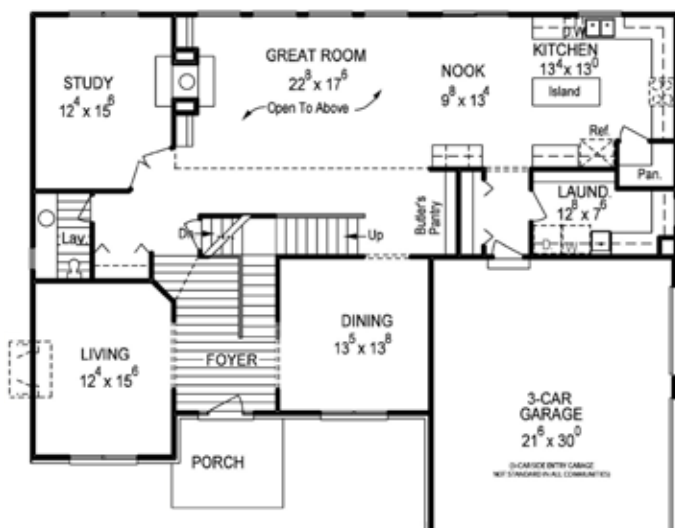
Guenther Homes

734-260-2119
GuentherHomes.com

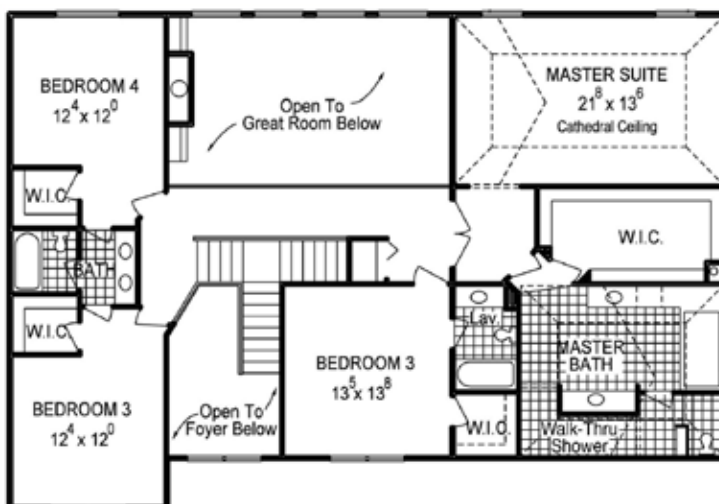


Sterling Trail is off Dexter Townhall Road just south of North Territorial Road. The major cross streets are Dexter Townhall Road and Dexter-Pinckney Road.

LaGRANDE - FIRST FLOOR



LaGRANDE - SECOND FLOOR



AREA'S LARGEST SELECTION OF WALLPAPER

Multi-purpose Fabrics - Cornices - Custom Bedding - Accent Pillows

SO MUCH MORE THAN DRAPERIES & BLINDS!

FREE DESIGN SERVICES

In Our Hunter Douglas Gallery Showroom or Your Home



WALLPAPER • BEDDING • CORNICES • DRAPERIES • VALANCES • FABRICS • CUSTOM FURNITURE

2215 W. Stadium Blvd. Ann Arbor, MI 48103 | M - F: 9-5:30 | Sat: 9 - 2

(734)662-6524 • www.deluxdrapery.com



Big Georges

HOME APPLIANCE MART



KITCHEN APPLIANCES - BBQ GRILLS - SMART HOME - FIREPLACES - LAUNDRY

MICHIGAN'S PREMIER APPLIANCE SHOWROOMS!



KitchenAid®



SAMSUNG



JENN-AIR®

2023 W. STADIUM BLVD. ANN ARBOR MI • 734.669.9500 • www.big-georges.com

6551 ORCHARD LAKE ROAD WEST BLOOMFIELD MI • 248.932.0870

4 Greystone Custom Builders



800 GREYSTONE DRIVE, CHELSEA (LYNDON TWP.) - *Greystone of Chelsea*

ABOUT THE HOME

Greystone Custom Homes strives to showcase its exceptional quality with the most unique and highly sought-after design of the season. Tucked away on a secluded wooded home site, this tasteful Multi-Generational home is not one to miss. This Amish built 4000 square-foot ranch with a private in-law suite provides ample space for the whole family to live in comfort together without sacrificing privacy. Each area boasts its own gourmet culinary kitchen accented by a one-of-a-kind fireplace set in a spacious open plan while multiple sunrooms offer panoramic views into the surrounding woodland. This peaceful and elegant retreat stands as the prime property of Chelsea's newest subdivision, Greystone.

ABOUT THE BUILDER

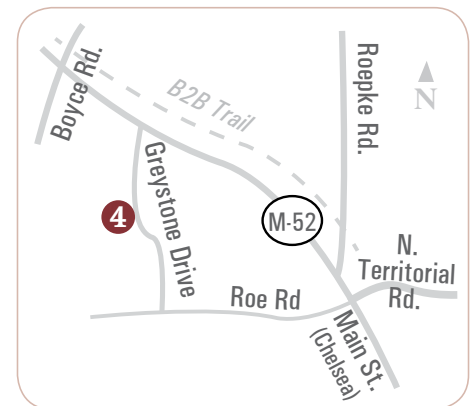
With twenty-five years of industry experience, Greystone Custom Homes demonstrates a proven commitment to excellence and client satisfaction as one of the premier custom home builders across Washtenaw, Livingston, and Oakland counties. Greystone has built its reputation of producing quality custom homes by specializing in marrying timeless Amish craftsmanship with contemporary styles and amenities. Communication and consultation stand at the heart of the Greystone building approach, from selecting a site location to designing the home, and finalizing the well appointed interior and exterior touches. Greystone prides itself on supporting their clients at every stage, making the building experience both efficient and exciting.

ABOUT THE SUBDIVISION

Nestled just at the border of the Waterloo Recreation Area, Greystone Custom Homes proudly presents GREYSTONE, Chelsea's newest and most scenic development. The rolling hills and dense woodland caught the eye of Car and Driver magazine, who used it as the location for their Fall photo shoot.

Homes in Greystone will have direct access to the miles of hiking, mountain biking, and horse riding trails weaving through this wooded area just minutes north of Chelsea. Active homeowners will also enjoy the Border-to-Border Trail, a paved walking and bike trail that will provide a picturesque and safe path directly to historic downtown Chelsea and eventually throughout Michigan.

Greystone's private, winding roads travel through twenty-three multi-acre building sites. The diverse landscapes — from wooded parcels and pond sites to an open, rolling pasture — will certainly appeal to a variety of preferences. The meadow and partially wooded lots will also accommodate custom out buildings. Greystone Custom Homes welcomes and encourages horse-owners and other hobbyists. With phase one nearly sold out, Greystone is a premier subdivision that anyone looking to craft their ideal custom home would not want to miss.



Take Main Street/M52 north from Chelsea just past N. Territorial Rd. Turn left onto Greystone Drive.



(734) 475-6900
greystonecustombuilders.com

CAUGHT BETWEEN TWO HOMES?
Bridge The Gap With An Interim Loan

Make your
offer more
attractive in
a competitive
market!



Carl Moraw
Mortgage Loan Officer
NMLS#: 688921
carlm@thestatebank.com
Cell: (248) 563-1686
Direct: (810) 714-3948



www.loansbyjoninnes.com | (810) 534-0800



**Our readers
plan to
spend over
\$2 BILLION
on homes
and property
in the next
12 months!**

The Marketeer is used by over 100,000 adult readers in Livingston, North Washtenaw and West Oakland Counties each month to make buying decisions.

How much of that spending would you like to attract to your business? Our audience is planning to spend money on your product. Call us today!

The Marketeer
Call (810) 227-1575
for advertising assistance
www.marketeer.ws



At Absolute Title, we take care of the details
of your closing so you can focus on the exciting,
fun aspects of buying or building your home.

Enjoy the Parade of Homes!

Proudly Sponsored by Absolute Title, Inc.

2875 W. Liberty Rd., Ann Arbor | 734-662-1050 | Fax: 734-662-3608 | AbsoluteTitleinc.com

5 Norfolk Homes



102 CAMPOLINA STREET, CHELSEA - Westchester Farms

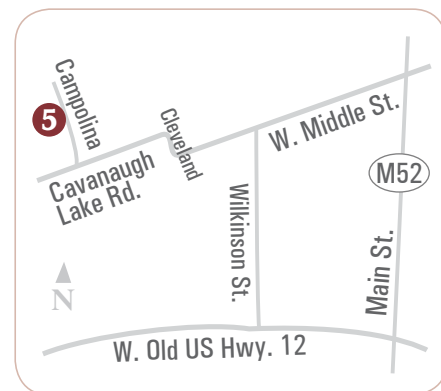
The Yorkshire Plan at Westchester Farms of Chelsea was designed in 2017 by award winning Architect Todd Hallett of TK Designs and Associates. This 5 bedroom 3.5 bath home with 2736 square feet and an additional 835 square feet in the finished basement is unique in the angular design elements. Westchester Farms is a new development in Sylvan Township located off scenic Cavanaugh Lake Road just one mile from downtown Chelsea. Choose from 13 cutting edge new home designs including ranch, first floor master and two-story styles. Design your Dream Home at Norfolk's Design Studio located on Jackson Road in Ann Arbor. There you will learn about product offerings and the latest in design trends.

ABOUT THE BUILDER

Norfolk Homes was founded 27 years ago with one goal in mind: to build beautiful distinctive homes with character. Today, we continue that tradition of building homes with designs that represent the best in aesthetics, form and function. Our unique collection of homes and communities extends throughout Southeast Michigan. We recognize that building a home for someone is both a privilege and a responsibility. Your home is more than just a financial investment; it is an intricate part of who you are. We would be honored to build your dream home.

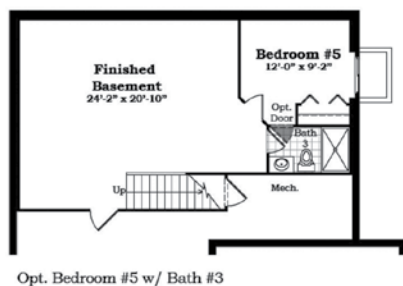


(734) 217-4944
Norfolk-Homes.com



From I-94, exit 159 towards Chelsea on M52 (S. Main St.). Turn left on Middle St, right on Cleveland St, left on Cavanaugh Lake Rd. and a right onto Campolina Street. The home is on the left.

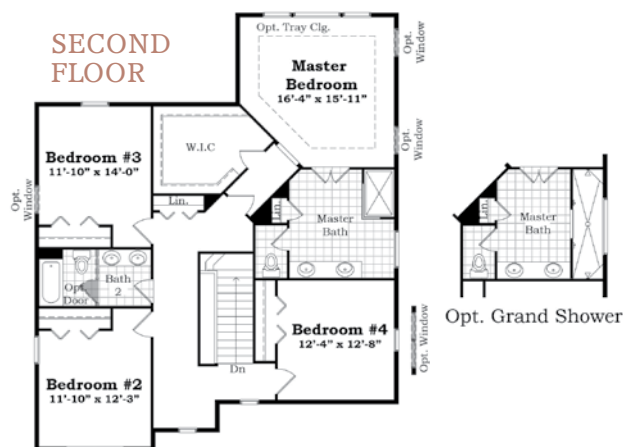
BASEMENT



MAIN FLOOR



SECOND FLOOR



LIVINGSTONDAILY.COM PRESS & ARGUS
LIVINGSTON DAILY
PART OF THE USA TODAY NETWORK



Mobile Social Desktop


Multi-platform marketing experts
 We combine the largest news and information audience in the state.

We are your one partner with one purpose, to help **YOUR BUSINESS GROW.**

- WEBSITE DESIGN
- SEARCH
- MAPS/REPUTATION
- DIGITAL DISPLAY
- TARGETED DISPLAY
- HIGH IMPACT
- VIDEO
- PPC
- HOMES
- TARGETED E-MAIL
- SOCIAL MEDIA
- CARS.COM
- PRINT ADS
- SPECIAL PUBS


LIVINGSTONDAILY.COM PRESS & ARGUS
LIVINGSTON DAILY
PART OF THE USA TODAY NETWORK

Call today for your FREE Digital Business Analysis 517 548-2000.



Find the latest shows, tours and local listings.

VISIT
 ► realestate.mlive.com



QUALITY PRODUCTS GREAT SERVICE EXPERT INSTALLATION



G & K FLOOR COVERING

Beautiful
FLOORS
 AFFORDABLE PRICES

*Eco-Friendly and Traditional Flooring
 Dustless Restoration of Hardwood Floors*

CARPET | MARMOLEUM | HARDWOOD | CORK | VINYL TILE | SHEET VINYL
 STRAND WOVEN BAMBOO | WATERPROOF FLOORING | AND MUCH MORE!

734-485-7007 GKFloors.com 5 Emerick St., Ypsilanti

6 Toll Brothers



6383 NORTH TRAILWOODS DRIVE, ANN ARBOR | *Trailwoods of Ann Arbor*

The Crestwood Farmhouse at Trailwoods of Ann Arbor features 2,601 sq. ft. of living space, 4 bedrooms, and 2 1/2 baths. Trailwoods is Toll Brothers newest single-family community located on the west side of Ann Arbor with Ann Arbor mailing address, Ann Arbor schools, low Scio Twp. taxes, and city water and sewer service. This quaint community features walking trails and a wooded nature area and is around the corner from Meijer, banks, restaurants, Lowe's, and Starbucks and is just 7 miles from the heart of Ann Arbor. Choose from all new home designs with mudrooms, large closets, well-appointed kitchens, and more plus hundreds of options to personalize.

THIS MODEL HOME FEATURES

- Impressive kitchen with grand center island with breakfast bar
- Spacious master suite with large walk-in closet, private bath, sitting area and beverage bar
- First-floor study with modern wall of windows
- Second-floor laundry center and first-floor mudroom

ABOUT THE BUILDER

Toll Brothers, an award winning Fortune 500 company, embraces a dedicated commitment to quality and customer service. Since 1967 we've been creating luxury communities in the best locations across the country. Toll Brothers is currently building nationwide and is a publicly owned company whose stock is listed on the New York Stock Exchange (NYSE:TOL). For five years in a row, Toll Brothers has been ranked the #1 Home Builder Worldwide on the FORTUNE Magazine "World's Most Admired Companies®" list.*



To locate the home on GPS, you may need to enter 229 S. Staebler Road.

From I-94: Exit Zeeb Road south. Travel .1 mile and turn right onto Jackson Road. Travel 1.1 miles and make a U-turn. Travel .5 miles to S. Staebler Road. Turn right onto S. Staebler Road and travel .5 miles. The community entrance is on the left.

Toll Brothers
AMERICA'S LUXURY HOME BUILDER®

(734) 995-5503
TrailwoodsofAnnArbor.com



We've helped
beautify homes
for more than
two decades!

- Custom Shower Doors
- Mirrors
- Table Tops
- Storm Doors & Screens
- Mirrored Closet Doors
- Plexi & Safety Glass
- Insulated Units
- Staircase & Deck Railing
- Obscure & Pattern Glass
- Custom Etching

Whether you're starting a
remodeling project or a new home,
contact us for all your glass needs.

To help you get started, visit our
showroom or website for ideas.

From standard to custom...we're
the clear choice™ for all your glass
projects!

Wolverine
Moore Glass, Inc.
The Clear Choice™

Visit our
showroom
today!

1072 Baker Road, Dexter (enter off Marshall Rd.)

www.wmglass.com

734.426.5600

Tell us about something interesting



Submit a story, news item, letter to the
editor, event announcement, photo, or
advertisement that reaches a local
audience of 60,000+

Contact Wendy Wood
wendy@thesuntimesnews.com or (734)648-0837

THE SUNTIMES NEWS

P.O. Box 366, Chelsea, MI 48118 • 118 S. Main, Chelsea, MI 48118
www.thesuntimesnews.com

Established in 2008

Serving the communities of Chelsea, Dexter, Manchester, and Saline.



gross g electric

Bringing your vision **TO LIGHT**



2232 S. Industrial Hwy • 734-665-8676 • www.grosselectric.com



GENERATION LIGHTING

7 Norfolk Homes

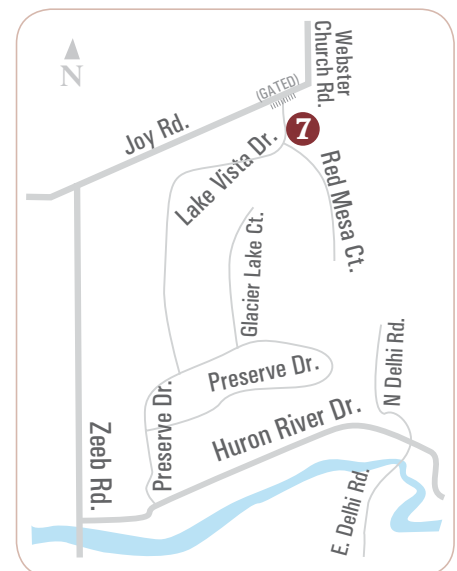


4454 LAKE VISTA DR., DEXTER - *Preserve of Dexter*

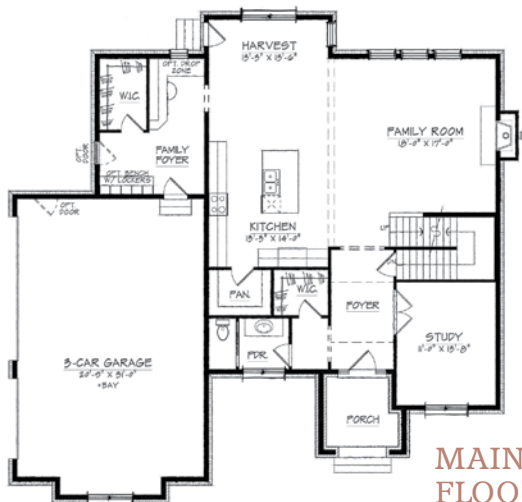
The Hampton Plan at the Preserve of Dexter is one of 5 New Home Designs by J. R. Ruthig of the TR Design Group in Bloomfield Hills. They specialize in custom residential designs in high-end communities. This two story executive home features 4 bedrooms, 3.5 baths and 3129 square feet. A notable design element of this home includes the oversized storage throughout the home; starting in the family foyer and extending to the master bedroom suite where the closet is larger than bedrooms in many homes. The Preserve of Dexter features sophisticated homes with a serene country setting located within the Dexter school district. Only four homesites remain in this picturesque community of luxury homes surrounded by lakes, trails and parks. Available floor plans are open and innovative with large windows and exquisite exteriors. Choose from ranch, first floor master suite and two-story homes. Design your Dream Home at Norfolk's Design Studio located on Jackson Road in Ann Arbor where you will learn about product offerings and current design trends.

ABOUT THE BUILDER

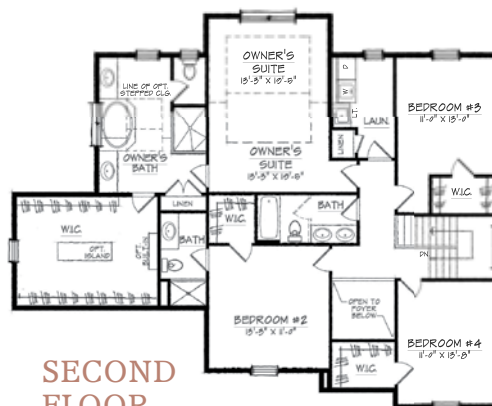
Norfolk Homes was founded 27 years ago with one goal in mind: to build beautiful distinctive homes with character. Today, we continue that tradition of building homes with designs that represent the best in aesthetics, form and function. Our unique collection of homes and communities extends throughout Southeast Michigan. We recognize that building a home for someone is both a privilege and a responsibility. Your home is more than just a financial investment; it is an intricate part of who you are. We would be honored to build your dream home.



From I-94, exit at Zeeb Rd. Go north on Zeeb. Turn right on Huron River Drive. Turn left on Preserve Drive. Turn left on Lake Vista Drive.



MAIN
FLOOR



SECOND
FLOOR

Norfolk
HOMES
Building Dreams, One Home At A Time

(734) 545-8550
Norfolk-Homes.com

DEXTER

CABINET & COUNTERTOP

734-426-5035

1084 Baker Road, Dexter, MI 48130

www.dextercabinet.com

1.800.566.6626 *Rely on us to be your one-stop septic shop!*

JIM KOVALAK

Excavating & Septic Tank Cleaning

Over 40 Years of Experience • Family Owned and Operated



Call us at 1.800.566.6626 (734.461.6838 local)
or visit our website at www.kovalaksepticsservice.com

**Receive \$10.00 off any
service with this coupon!**

Must be combined with any other offer. Offer is good for one use only.

- Septic System Installations
- Septic Tank Cleaning & Pumping
- Well & Septic Inspections
- Septic System Repairs and Snaking
- Sewage Ejection Pumps
- Full Service Excavation
- Drain Fields
- Bull Dozing, Grading and Driveways

LICENSED & INSURED



M I D W E S T E R N C O N S U L T I N G

LAND DEVELOPMENT • LAND SURVEYING
MUNICIPAL • LANDSCAPE ARCHITECTURE
INSTITUTIONAL • TRANSPORTATION
WIRELESS COMMUNICATIONS

3815 Plaza Drive | Ann Arbor, MI 48108
P: 734.995.0200 | www.midwesternconsulting.com



Save thiiiiiiiiis much with **5% down***
when you build your home.

Build with as little as **5% down*** or buy with as little as **3% down***.
For the roof over your heart.

Connect with a loan officer. Call (734) 237-6587 or visit LMCU.org/Mortgage.

*For well qualified borrowers. LMCU NMLS ID #442967. Equal Housing Lender.



You'll Love Banking Here.

8 Norfolk Homes



1002 CORNWELL ST., ANN ARBOR - *Cornwell Farms*

The Canterbury Plan at Cornwell Farms in Ann Arbor is one of 5 New Home Designs by J. R. Ruthig of the TR Design Group in Bloomfield Hills. They specialize in custom residential designs in high-end communities. This First Floor Master Suite Design features 4 bedrooms, 3.5 baths and 3120 square feet. From the striking Craftsman style exterior to the exquisite interior features, this home is open and welcoming and could serve both growing families and downsizers well. Cornwell Farms is a new community located in scenic Ann Arbor Township and is just 3 miles to downtown Ann Arbor and the University of Michigan Campus and Medical Center. With only 27 estate sized homesites, this small enclave of executive style homes offers an agrarian setting with close proximity to the amenities and recreational activities that makes Ann Arbor a wonderful place to live. Design your Dream Home at Norfolk's Design Studio located on Jackson Road in Ann Arbor where you will learn about product offerings and current design trends.

ABOUT THE BUILDER

Norfolk Homes was founded 27 years ago with one goal in mind: to build beautiful distinctive homes with character. Today, we continue that tradition of building homes with designs that represent the best in aesthetics, form and function. Our unique collection of homes and communities extends throughout Southeast Michigan. We recognize that building a home for someone is both a privilege and a responsibility. Your home is more than just a financial investment; it is an intricate part of who you are. We would be honored to build your dream home.



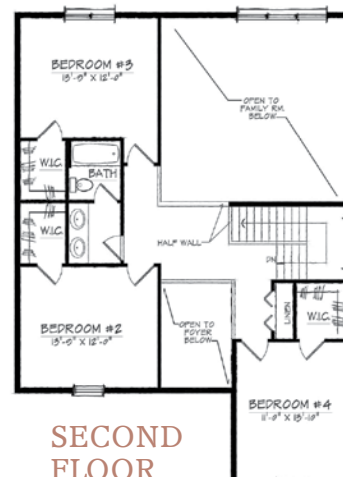
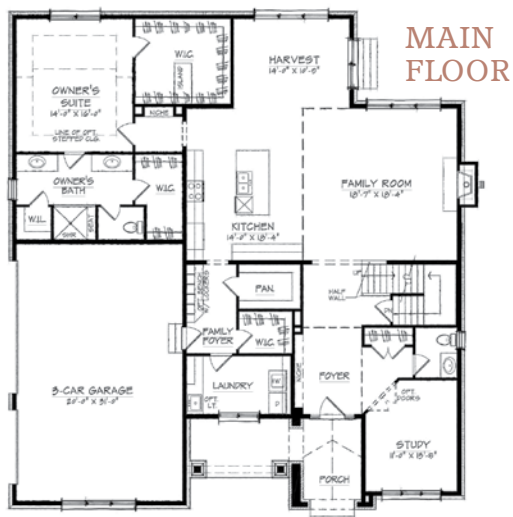
To locate the home on Google Maps, you may need to enter "Cornwell Farms by Norfolk Homes".

From US-23, exit onto Barton Drive. Go east on Barton Drive. Turn left, heading north on Pontiac Trail. Cornwell Farms is on the left side.



(734) 545-8550

Norfolk-Homes.com



LABOR PROBLEMS? BUDGET PROBLEMS? JOBSITE PROBLEMS?

Rising material costs, labor shortages,
increased days under construction,
code regulations, product availability.

 **TandoStone**TM
IS THE **ANSWER**

TandoStoneTM offers the premium look of real stone without the expense or challenges of stone veneer. Its unique **Tando TruGrit**TM texture gives the feel and low-gloss look homeowners desire. Professionals love the rigid panels that install quickly and easily with standard siding tools. The high tech composite construction of **TandoStone** makes it impervious to moisture, allowing installation at ground level and in any weather. It's easy to create unique, personalized designs with multiple color options and two stone profiles; dry-stack style **Stacked Stone** and the grouted, hand-picked look of **Creek Ledgestone**.



All photos feature **Stacked Stone**



For more information and details to solve the
problems you face every day, go to
tandobp.com to find your local **Tando** Dealer.

DISTRIBUTED BY:
 **Hansen
Marketing
Services
Inc.**
1-800-552-4877

9 Toll Brothers

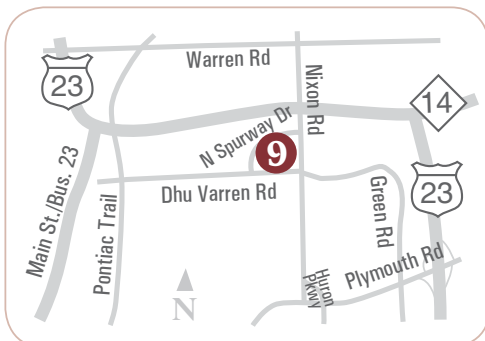
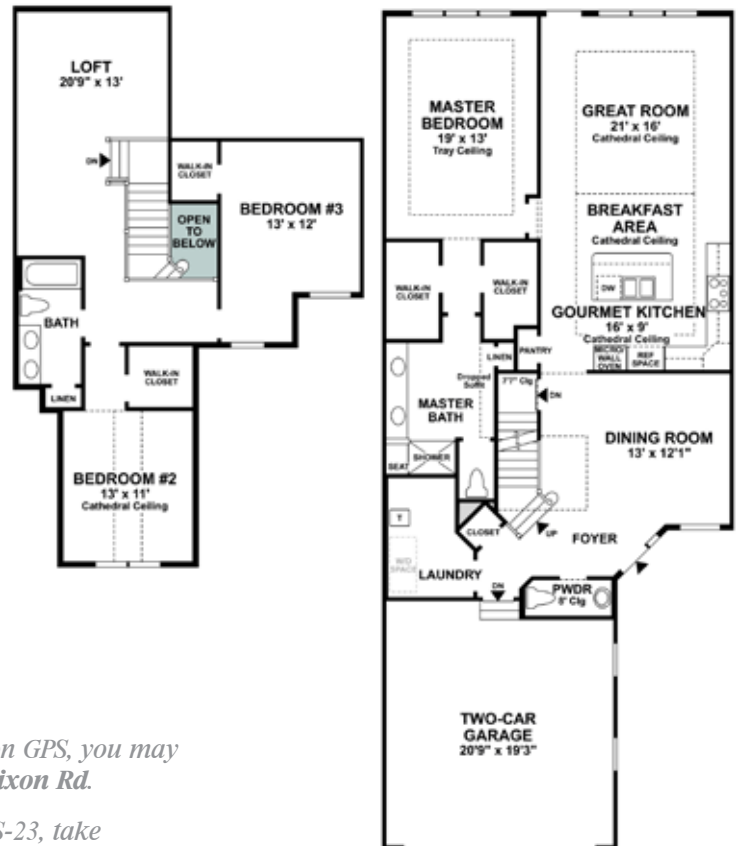


3229 ARDLEY AVE, ANN ARBOR | North Oaks - The Vanleer

The Vanleer at North Oaks of Ann Arbor features 2,278 sq. ft. of living space, 3 bedrooms, and 2 1/2 baths with a first-floor master suite and open-concept living area. The second-floor is complete with two additional bedrooms with walk-in closets, a full bath, and an amazing loft space. North Oaks offers a premier location just minutes from the north campus of the University of Michigan and downtown Ann Arbor. Residents enjoy resort-style amenities including a spectacular three-story clubhouse with two pools, fitness rooms, bar and billiard room, and more.

ABOUT THE BUILDER

Toll Brothers, an award winning Fortune 500 company, embraces a dedicated commitment to quality and customer service. Since 1967 we've been creating luxury communities in the best locations across the country. Toll Brothers is currently building nationwide and is a publicly owned company whose stock is listed on the New York Stock Exchange (NYSE:TOL). For five years in a row, Toll Brothers has been ranked the #1 Home Builder Worldwide on the FORTUNE Magazine "World's Most Admired Companies®" list.*

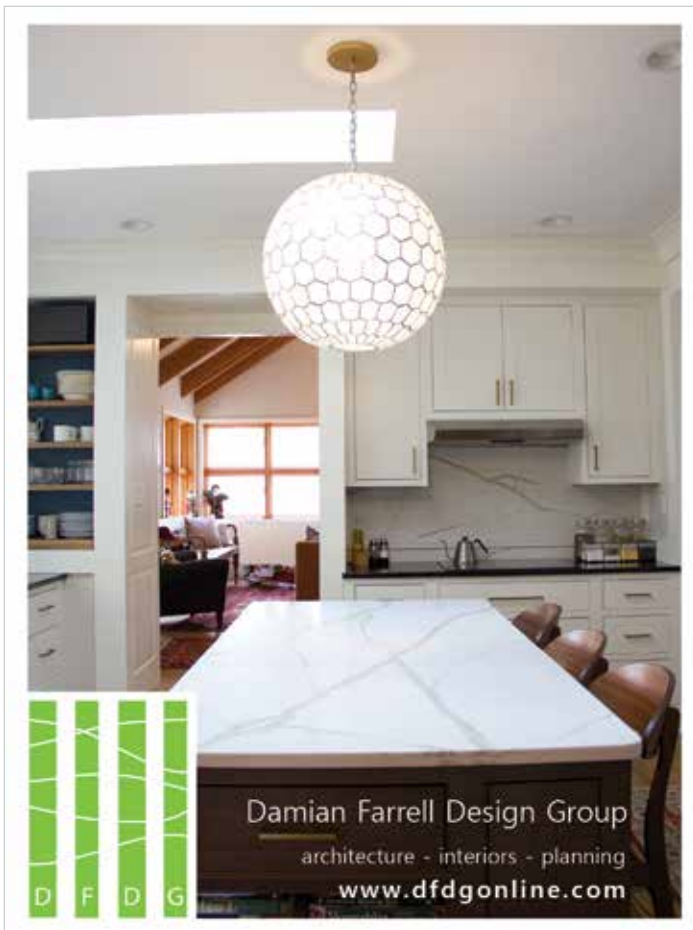


To locate the home on GPS, you may need to enter 3379 Nixon Rd.

From Northbound US-23, take the Plymouth Rd exit. Go left onto Plymouth Rd, heading west. Turn right onto Green Rd. Follow Green Rd to Nixon Rd. Turn right onto Nixon. North Oaks is on the west side of Nixon Rd, north of Dhu Varren.

Toll Brothers
AMERICA'S LUXURY HOME BUILDER®

(734) 224-6686
North-Oaks.com




AUTO | HOME
BUSINESS | LIFE

YOU INSURE YOUR HOME. *Protect what's underneath it, too!*

Many homeowners are surprised to learn that the repair or replacement of damaged service lines on their property — such as underground wiring and piping — is their responsibility, not the service provider's. These expenses aren't always covered in a basic homeowners' policy. Our experienced professionals will help develop the right solution for your needs.


We'll work with you to develop an insurance program unique to your specific needs and make sure you have enough coverage, up to policy limits if needed.

HYLANT

24 FRANK LLOYD WRIGHT DRIVE, SUITE 14100
ANN ARBOR, MI | 734-741-0044
hylantpersonalinsurance.com

Land Planning
Landscape Architecture
Civil Engineering
Land Surveying
High Definition Scanning
Forensic Engineering
Fire Investigation

.....



NEDERVELD
Experience...the Difference

PROVIDING RESULTS-ORIENTED SOLUTIONS



**EXPERIENCE THE DIFFERENCE WORKING
WITH OUR TEAM. CONTACT US TODAY!**

📞 800.222.1868 | 🌐 www.nederveld.com

10 Toll Brothers



3233 ARDLEY AVE, ANN ARBOR | *North Oaks - The Bethesda*

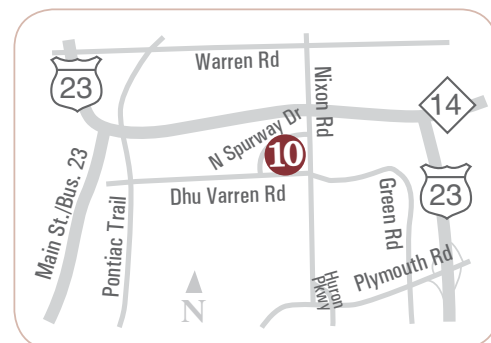
The Bethesda at North Oaks of Ann Arbor features 2,100+ sq. ft. of living space, 3 bedrooms, and 2 1/2 baths. North Oaks offers a premier location just 3/4 of a mile from the north campus of the University of Michigan and only a few miles from downtown Ann Arbor, area hospitals and medical facilities, and more. A 5 minute walk takes you to Traverwood Library, Olsen Park and Dog Park, Oakwoods Nature Area and Dhu Varren Woods Nature areas. Residents enjoy resort-style amenities including a spectacular clubhouse with fitness center, locker rooms, bar and billiard room, outdoor lap and wading pools, and yoga room. Children attend Ann Arbor Schools: Logan Elementary and Clague Middle School are within walking distance.

THIS MODEL HOME FEATURES

- Open and spacious living level with central kitchen featuring an oversized island
- Spacious master suite with private bath featuring an enormous shower with bench
- Third-story loft with rooftop deck
- Entry level features two-car garage and finished space serving as a home office

ABOUT THE BUILDER

Toll Brothers, an award winning Fortune 500 company, embraces a dedicated commitment to quality and customer service. Since 1967 we've been creating luxury communities in the best locations across the country. Toll Brothers is currently building nationwide and is a publicly owned company whose stock is listed on the New York Stock Exchange (NYSE:TOL). For five years in a row, Toll Brothers has been ranked the #1 Home Builder Worldwide on the FORTUNE Magazine "World's Most Admired Companies®" list.*



To locate the home on GPS, you may need to enter 3372 Nixon Rd.

From Northbound US-23, take the Plymouth Rd exit. Go left onto Plymouth Rd, heading west. Turn right onto Green Rd. Follow Green Rd to Nixon Rd. Turn right onto Nixon. North Oaks is on the west side of Nixon Rd, north of Dhu Varren.

Toll Brothers
AMERICA'S LUXURY HOME BUILDER®

(734) 224-6686
North-Oaks.com



Made in Michigan – Made for You.

Get your next hardscape project off to a colorful start by choosing Fendt – the supplier for Michigan landscape contractors and dealers. Infuse your new landscape with color by using our vivid brick pavers. If you can't find the perfect shade, we'll create one for you.

All Fendt products are made in Michigan, just for you. With 95 years' experience, you can count on Fendt for quality products.

Dream in color and Fendt will make it a reality.



22005 Gill Rd. / Farmington Hills, MI 48335 / (248) 474-3211
3285 W. Liberty / Ann Arbor, MI 48103 / (734) 663-4277
fendtproducts.com

11 Meadowlark Design+Build



1242 ARLINGTON BLVD., ANN ARBOR *Top of the Hills*

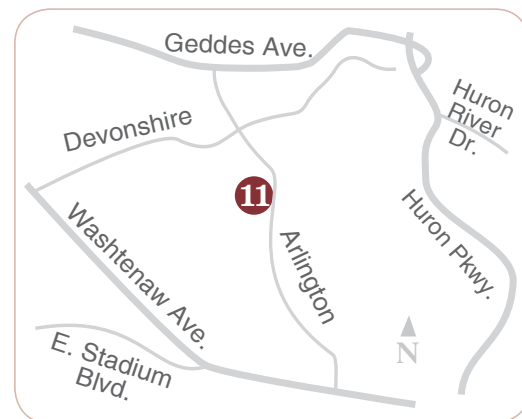
Situated atop a beautiful lot in Ann Arbor Hills, our clients' vision was a shingle-style home made for an active family. A contemporary take on a classic craftsman house, this custom home is built for the future with classic, low maintenance finishes.

The homeowner is professionally trained in culinary arts, so thoughtful kitchen design was important. Quality of construction was valued over square footage, and active outdoor space was integral to the design. The result is a comfortable family home that is durable and long-lasting.

At this home Meadowlark will be showcasing the next-generation of Virtual Reality Design with a five-minute virtual walk through of a model home. Stop by and experience this amazing technology for yourself. For more information please go to our website at Meadowlarkbuilders.com/about-us/events/

ABOUT MEADOWLARK DESIGN+BUILD

Meadowlark Design+Build combines architectural design with quality construction to create homes and remodels that are healthy, comfortable and energy-efficient. Based in Ann Arbor, we are a nationally recognized design-build firm with extensive experience in advanced green building systems and one-of-a-kind quality finishes. On time and on budget, our work is backed up with a three-year bumper-to-bumper warranty, a 10-year major systems warranty, and our promise of outstanding quality at a fair price.



From Washtenaw: Go north on Arlington, the home is on the left side.

From Geddes: Go south on Arlington, the home is on the right side.



734-332-1500

www.MeadowlarkBuilders.com



buildersplumbingsupply.com

Builders Plumbing & Heating Supply
Plumbing & HVAC • Bath & Kitchen

Ann Arbor
2464 S. Industrial Hwy
734-668-8200

Lansing
700 S. Hosmer
517-485-7219

Midland
3305 Centennial
989-496-3113

let us make your
DREAM. COME. TRUE. **MOEN®**



THE LUCY ANN LANCE SHOW

Around the Home
ON 1290 AM WLBY RADIO

***Lively discussion with local builders
and home improvement experts!***

Thursdays at 8:50 AM & 10:50 AM, Saturdays 9:50 AM
Around the Home Weekend: Sundays 11:00 AM to 12:00 PM
Tune in to 1290 AM, listen live and stream archives at
www.LucyAnnLance.com

1290 AM WLBY
ANN ARBOR'S TALK STATION

In Partnership with

BRAG BUILDERS & REMODELERS ASSOCIATION OF GREATER ANN ARBOR



10308 COBB HOLLOW FARM ROAD, SALINE *Saline Valley Farms*

The Richmond Deluxe by Guenther Homes is the home with everything you need! Flowing floor plan leads from the kitchen to the two story great room. Perfect for the large family with a private study, formal dining room and formal living room. On the second floor, the bridge leads you to the private master suite with beautiful ceramic tile, shower and jetted tub. There is a guest room with private bath and walk-in closet as well as a Jack and Jill bath for the remaining two bedrooms. Much, much more!

- | | |
|--------------------------------------|--|
| Features include: | • Princess Suite or guest bed and bath |
| • Dynamic Kitchen | • Office w/ built-in book shelves |
| • Two Story Great Room & Front Entry | • Huge laundry room |
| • Bridge to Master Suite | • 2950 sq. ft. |
| • Jack 'n' Jill bathroom | • 4 Bedrooms, 3.5 Baths |



734-260-2119

GuentherHomes.com



From downtown Saline, go south on Saline-Milan Road. Turn right onto Milkey Road. Turn left onto Ella Lee Road. Turn right onto Cobb Hollow Farm Rd.

THE RICHMOND DELUXE FIRST FLOOR



OPTIONAL MASTER BATH



THE RICHMOND DELUXE SECOND FLOOR





INVESTED in OUR COMMUNITY!

WeLoveAnnArbor.com

Neighborhood Spotlights



Community Events



Local Leaders



Follow us on Facebook @WeLoveAnnArbor 

Reach our staff with submission ideas or advertising opportunities at 734-216-5955 or Info@WeLoveAnnArbor.com



SAVE THE DATES FOR 2020!



Home, Garden & Lifestyle Show March 21 & 22

Saturday 9 - 6
Sunday 10 - 5

Washtenaw Farm Council Grounds, 5055 Ann Arbor-Saline Rd. | \$5 admission (12 & under free)

LIVE PRESENTATIONS | CONCESSIONS | HOME DECOR | DEMOS AND MORE



Join our e-mail list for event reminders & special ticket offers www.BRAGANNARBOR.COM

Make Your Event Extraordinary!

Rent the BRAG Ann Arbor EVENT CENTER & CONFERENCE ROOM

The BRAG Ann Arbor Event Center hosts:

- Business Meetings, Seminars, Holiday Parties
- Wedding Receptions, Rehearsal Dinners, etc.
- Catered Events, Graduation Parties, and more

The Event Center is located on our lower walk-out floor.
98 person capacity. Includes fridge, 86 chairs,
20 classroom tables and 8 pillar tables.



Visit BRAGAnnArbor.com
for pricing and more details.



- Accommodates 98 people
- Minutes from I-94 and M-14
- Extensive Lakefront Views
- Kitchen w/ Fridge & Large Island
- Updated Dual Restrooms
- Movable Tables and Chairs
- Wireless Internet, HDTV, Cable TV
- New Patio w/ Grills & Gas Firepit
Rolling Coolers & Built-In Tables
- Helpful Staff To Assist Booking
- Affordable Rates
- Bring in your own food or catering

The Conference Room is frequently used for:

- Training and Planning Sessions
- Interviews and Networking Meetings
- Presentations & client consultations

The Conference Room (not shown) is
located on our main floor. 20 person
capacity. Includes mini-fridge.

Builders & Remodelers Association of Greater Ann Arbor, 179 Little Lake Drive, Ann Arbor, MI
Book your event with Andrea by phone at 734-996-0100 or at asullivan@BRAGAnnArbor.com

BUILDING SKILLS. BUILDING CHARACTER. BUILDING HOMES.



**The Ann Arbor Student
Building Industry Program**

Established 1970

www.AAStudentBuilding.org



CELEBRATING THE COMPLETION OF OUR 49TH HOUSE!

The success of the Ann Arbor Student Building Industry Program can be seen in the lives of our students. Many local builders got their start in this very program! Building tradespeople are in high demand for many great careers. Ann Arbor Public Schools students are encouraged to ask their counselor and join our next team.



Special Thanks to the MASCO Corporation for Supporting
the Ann Arbor Student Building Industry Program!



www.salineschools.org/schools/swwc/programs/building-trades



The SWWC Building Trades program prepares students for employment in the construction industry. There is so much for a student to learn in the field, and the diversity of career opportunities makes this industry one of the most interesting and challenging.

The Building Trades class prepares students with entry level skills needed for employment through actual construction of a house.

The specific areas of study include: site preparation, job site safety, dry wall, masonry, finish carpentry, rough carpentry, painting and wall covering, heating, plumbing,

construction technique, wiring, insulation, management skills, and employability skills.

A solid foundation in math skills is needed, geometry is recommended. Articulation exists so that students can earn college credit with Washtenaw Community College. Enrolled students will have the opportunity to compete at SkillsUSA competitions. This is a full year class offered in the morning (AM) and in the afternoon (PM).

Prerequisite: Grades 11-12

Contact Us: If you have questions please e-mail
Matt Hagood at hagoomat@salineschools.org

South and West Washtenaw Consortium (SWWC) | 1300 Campus Parkway Saline, MI 48176 | (734) 401-4476



Now offering Remodelers Home Tours in Spring & Fall!



September 21 & 22, 2019



Spring 2020

*Tour Stunning Remodeled Homes in
our area and Inspire your Improvements!*



BRAGAnnArbor.com
734-996-0100



- AWARD-WINNING DESIGN
- DECKS • PATIOS • WALLS
- GARDENS & MAINTENANCE
- WATER FEATURES

Now offering TREE WORK!

GreenStreet Tree Care is part of the Lotus family! Trimming, removals, spraying & more.



LOVE YOUR LANDSCAPE

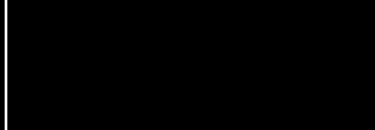


LOTUS
GARDENSCAPES

VISIT OUR NURSERY & SHOWROOM LOTUS DESIGN CENTER

Washtenaw County's premier resource for landscape elements & accessories. Our award-winning design experts can advise you on specialty plants, landscape lighting, firepits, water features, and unique pottery & accessories. Envision your perfect outdoor space in our stone, paver and decking sample showrooms and beautiful garden displays!

1885 BAKER RD. DEXTER, MI 48130
LOTUSGARDENSCAPES.COM 734-426-6600
GREENSTREETTREE.COM 734-996-9020



ARCHITECTURAL *Resource*

Residential
Architecture,
it is not just
what we do...
it is who
we are,
*for over
25 years*



Michael R. Klement AIA

Residential Design Specialists, Smart Sustainable Design

734.769.9784 www.architecturalresource.com

Esquire INTERIORS

AFFORDABLE LUXURY SINCE 1952

WINDOW TREATMENTS • FURNITURE • FLOORING • CUSTOM CLOSETS • AND MORE!

WINDOW TREATMENTS

- Hunter Douglas Gallery and Authorized Service Center.
- Custom draperies and valances created by our in-house seamstress.



THE LATEST FLOORING SOLUTIONS

- Carpet, hardwood, luxury vinyl, cork, tile and stone.
- Exceptional area rugs to add the finishing touch.

NORWALK CUSTOM FURNITURE

- Sofas, sectionals, accent chairs and more custom tailored in over 850 fabrics and leathers.
- Ready to ship in 35 days!



Let us help you make the most of your next project! Call or visit:

ANN ARBOR • 734 663-7011
6235 Jackson Rd. (next to Menards)

PLYMOUTH • 734 451-1110
863 W. Ann Arbor Tr. (downtown)

YOUR LOCATION • 734 663-7011
for a mobile design studio appointment

www.EsquireInteriors.com

f Follow us for the latest specials and design tips!

NORWALK
FURNITURE

 **HunterDouglas**
Authorized Service Center

 **MOHAWK**

Karastan

 **ACCREDITED
BUSINESS**