

PARADE OF HOMES 2017

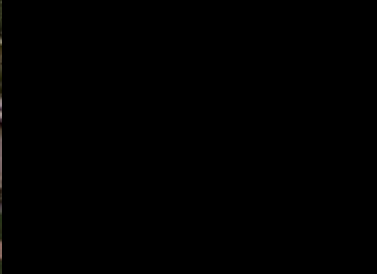
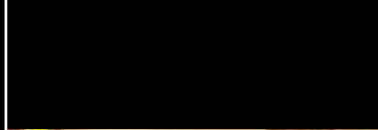
June 23 - 25

Friday 12 - 7 | Saturday & Sunday 12 - 5



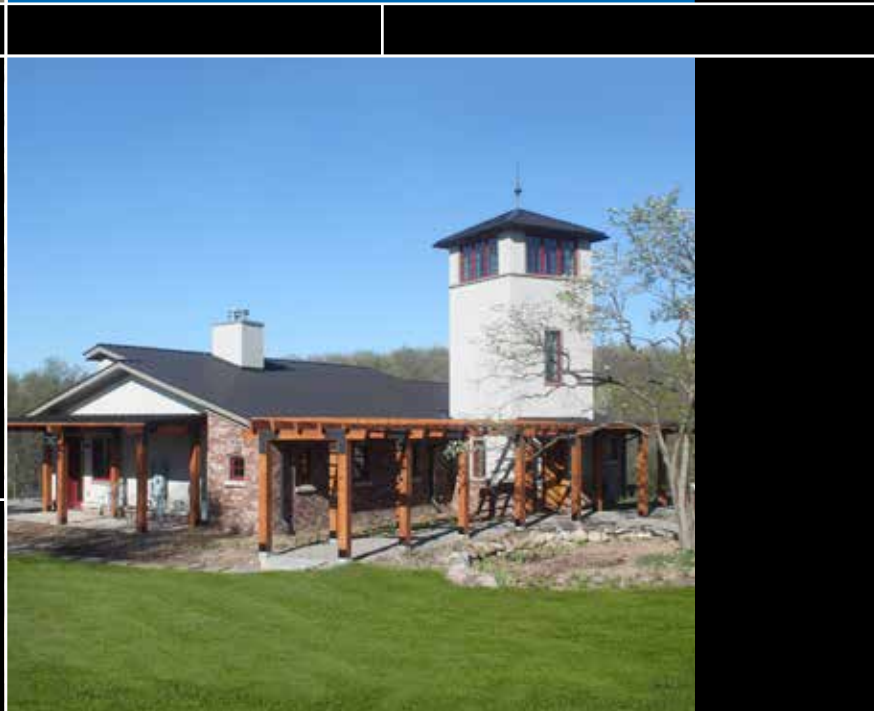
Tour 14 Enchanting Homes





ARCHITECTURAL
Resource

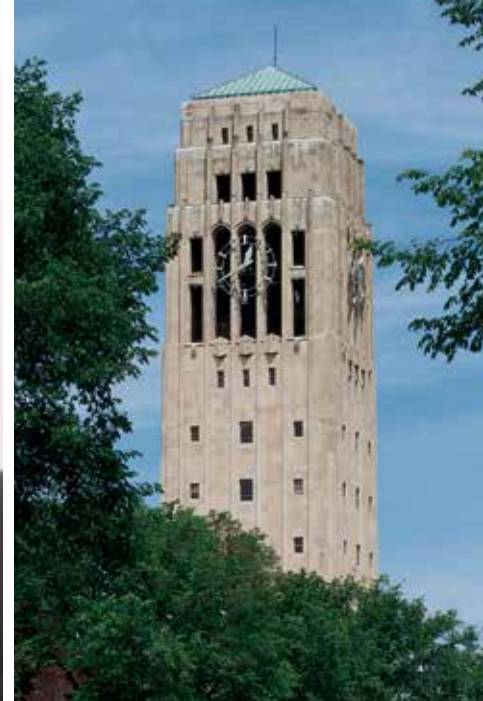
Residential
Architecture,
it is not just
what we do...
it is who
we are,
*for over
25 years*



Michael R. Klement AIA
Residential Design Specialists, Smart Sustainable Design
734.769.9784 www.architecturalresource.com



Excitement is Building in Ann Arbor



Kensington Woods

- Intimate community in a wooded setting
- Spacious designs offer first- or second-floor master suites
- Low-maintenance living just minutes from University of Michigan and downtown Ann Arbor
- Nationally acclaimed Ann Arbor schools and low township taxes

Luxury villas from the mid-\$300s

2680 Scio Church Road, Ann Arbor, MI 48103
(734) 769-9660 | Open daily 11 am-6 pm

NORTH OAKS ANN ARBOR

- Resort-style amenities include clubhouse, fitness center, and pools
- Prestigious Ann Arbor School District, walk to Elementary Schools
- Convenient location—only minutes from downtown Ann Arbor & University of Michigan
- Low-maintenance living with lawn care and snow removal included

Luxury townhomes from the mid-\$300s

2999 Nixon Road, Ann Arbor, MI 48105
(734) 224-6686 | Open daily 11 am-6 pm

TRAILWOODS OF ANN ARBOR

- Expansive home sites; many with wooded nature park views
- Ann Arbor mailing address, Ann Arbor schools, low Scio Twp. taxes, and city water & sewer
- Minutes from all the conveniences you need - schools, parks, shopping, restaurants, and more
- Exceptional location on the west side of Ann Arbor with quick access to I-94

Luxury single-family homes coming soon

(844) 838-5263

Visit TollBrothersAnnArbor.com/parade

Brokers welcome. Homes available nationwide. Prices subject to change without notice. Photos are images only and should not be relied upon to confirm applicable features. This is not an offering where prohibited by law.



IF IT DOESN'T SAY TYVEK, IT ISN'T! All housewraps were not created equal.



ENSURE THAT YOUR NEW HOME GETS
THE QUALITY PROTECTION IT DESERVES

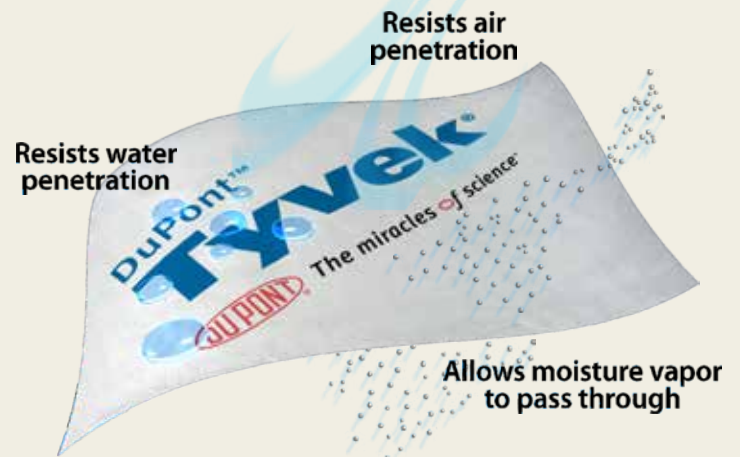
Tyvek® performs ... Protecting against air and bulk water penetration.

Tyvek® breathes ... Moisture vapor can pass through to allow drying.

Tyvek® protects ... As it has no holes ... and is backed by a full DuPont Weatherization System 10-Year Limited Warranty for product AND labor.

Tyvek® adds real value ... By **reducing home energy costs** through control of air flow and helping insulation work better.

Tyvek® means trust ... It is made by DuPont in the United States. Over 5 million homes have been wrapped in Tyvek®!



PEACE OF MIND FROM A NAME YOU CAN TRUST

DuPont™ Tyvek® weather barriers come from DuPont, a trusted name dedicated to providing you with innovative and reliable products for over 200 years.

Visit weatherization.tyvek.com for more information.



Need expert assistance, technical info, or installation tips? Hansen's highly trained Tyvek® specialists are here to help! Just call 800-552-4877.

Distributed by:



Hansen Marketing Services Inc.

1000 Decker Road
Walled Lake, MI 48390
800-552-4877
www.hansenmarketing.com

PINE RIDGE

ESTATES

*Luxurious custom homes, personalized
for your distinguished lifestyle.*



GRAND OPENING

Pine Ridge Estates is Ann Arbor's newest luxury development of distinctive, custom-built homes.

Located just minutes from downtown Ann Arbor, on a private cul-de-sac surrounded by towering pine trees, Pine Ridge Estates offers affluent living in a serene country setting. Nearby you will find a multitude of shopping and dining experiences and easy access to I-94 and M-14 for easy commuting.

Pine Ridge Estates is exclusively designed and built by **Main Street Homes**, the local leader in superior residential construction. With meticulous attention to detail, Main Street Homes delivers unparalleled service, quality, and craftsmanship while creating the home of your dreams.

- Spacious one acre home sites
- Ann Arbor mailing address & low Scio Township taxes
- Located just west of Wagner Road off of Pratt Road
- Nationally recognized Ann Arbor schools
- Homes starting at \$1 million





**Dream it.
Build it.
Live it.
Love it.**

**Working from the ground up? We'll help.
With a custom loan for your custom home.**

Consider the flexibility of our Construction Advantage Loan. We offer a traditional one-time close. Or we can break your loan into two closes: the first for construction, the second for your life in the home. Our lending experts will care for your loan as if it were their own.



Eric Bradley
NMLS 131784

Regina Olegario
NMLS 133949

Kim Blair
NMLS 131607

Tom Bullard
NMLS 131617

Karen Hallway
NMLS 133980

Josh Blair
NMLS 131602

Amaichi Udoji
NMLS 131600

Melinda Cain
NMLS 153078

Ken Brown
NMLS 131602



Emily Elliott
NMLS 131613

Peggy Wilson
NMLS 133950

Bill Roberts
NMLS 131621

Paul Herdon
NMLS 136215

Cathy Dodak
NMLS 134826

Teri Marshall
NMLS 131610

Ron Odenwald
NMLS 153898

Penny Schroeder
NMLS 133952

Jim O'Kunze
NMLS 131598



The Home Loan for Your Life
734.669.8000

**HURON
VALLEY
FINANCIAL**

2395 Oak Valley Drive, Suite 200
Ann Arbor, Michigan 48103
www.HuronValleyFinancial.com





Kitchen Design by Brie Daniels for Hunter Pasteur Homes
Photography by Beth Singer

Merillat
We are America's Cabinetmaker.™

Creating Spaces in the Home People will Love

From full-scale renovations of kitchens and baths to wet bars and laundry rooms, KSI delivers best-in-class design concepts and products to homeowners and trade professionals. You imagine it, and we will create it.

Visit our **Ann Arbor Location at 3365 Washtenaw Ave.**
Ann Arbor (734) 769-7669 Builder Sales (855) 339-0100

KSi

Your home. By design. For life.



KSIKitchens.com



Locations in:

Ann Arbor | Birmingham | Brighton | Livonia | Macomb | Toledo, OH | Lima, OH

PARADE OF HOMES

June 23-25

FRIDAY 12 - 7
SATURDAY & SUNDAY 12 - 5

Tickets will be sold at each home, and include admission to all homes during the event. \$10 per person, ages 16 & under are free.

For more details, call or visit our websites:



WASHTENAW COUNTY
BRAGAnnArbor.com
734-996-0100



LIVINGSTON COUNTY
HBALC.com
810-227-6210



1 Chestnut Home Builders
Timber Green
3818 Timber Green Court, Genoa Township 11



2 Capital Custom Homes
Waverly Woods
3007 Waverly Woods Lane, Howell..... 13



3 Capital Custom Homes
Walnut Ridge Estates
2171 Walnut View Drive, Hartland Township 15



4 Chestnut Home Builders
Fiddler Grove
1972 Fiddler Court, Hartland Township 17



5 Paul Elkow Building Co., LLC
The Meadows of Hidden Lake
8350 Stoney Creek Drive, South Lyon..... 19



6 Guenther Building Company
Hartman Farms
5816 Sterling Trail, Dexter 21



7 Norfolk Homes
Castleton Farms
11475 Castleton Court, Dexter 23



8 Meadowlark Design Build
Red Pine Lodge
18880 North Territorial Road, Chelsea 25



9 United Methodist Retirement Communities & Peters Building Company
The Prairie Cottages
805 West Middle Street, Chelsea 27



10 Ann Arbor Student Building Industry Program
Kirkway of Scio
348 Sedgewood Lane, Ann Arbor 29



11 Architectural Resource & Fireside Home Construction
Burh Becc at Beacon Springs
3200 Tessmer, Ann Arbor 31



12 Guenther Building Company
Thistle Down Farms
7670 Whirlaway Drive, Saline..... 33



13 Guenther Building Company
Saline Valley Farms
10308 Cobb Hollow Farm Road, Saline..... 35



14 South & West Washtenaw Consortium - Student Building
Saline Valley Farms
10341 Cobb Hollow Farm, Saline 37

SPONSORED BY



Visit BRAGAnnArbor.com for interactive maps, directions, and more!

“Like” BRAG Ann Arbor on Facebook for event alerts, discount tickets, and more!



BUILDING ONE DREAM HOME AT A TIME.

CONSTRUCTION 7/1 ARM LOAN SPECIAL

3.24%

3.57%
APR*

Chemical Bank Mortgage Loan Specialists are ready to help your clients build their dream home. We offer a variety of construction products at competitive rates, plus one-time closing and local decision making to keep your project on track.

Contact one of our dedicated Construction lenders to learn more.



Sherrie Dalton

Brighton

NMLS #629441

C: 810.923.8730 | D: 810.220.6357

Sherrie.Dalton@ChemicalBank.com



Beth Maybee

Ann Arbor

NMLS #1036149

C: 734.904.7147

Beth.Maybee@ChemicalBank.com



Tom "Smitty" Smith

Brighton

NMLS #830090

C: 248.921.7686

Thomas.Smith@ChemicalBank.com

*APR = Annual Percentage Rate. Rates are based on the borrower's credit score. All offers subject to credit approval. Some fees and conditions may apply. Promotional Rates are offered for a limited time. APR calculations are based on a loan amount of \$280,000. Interest only payments during the construction phase. Thereafter, principal and interest payments commence for the next 7 years. Interest rates are subject to potential increases over the life of the loan, once the initial rate for the 7-year period expires. Payments must be automatically deducted from a Chemical Bank account to obtain this rate. Rates for loans without automatic payment from a Chemical Bank account will be 3.49%/3.690% APR. Check with your local Chemical Bank for more information. Rate effective as of 04/03/17 through 06/30/17.

**CHEMICAL
BANK** 

Creating Community Chemistry.

Member FDIC 

1 Chestnut Home Builders - *Timber Green*



3818 TIMBER GREEN COURT, GENOA TOWNSHIP

Welcome to *The Woodland*. This low-maintenance luxury ranch that has become a signature of Chestnut Home Builders. Visit us & see these features:

- Private Gated Community
- Brick, Stone & Hardie low maintenance exterior
- 15 year Superior Wall foundation warranty
- Open floor plan with large island, kitchen/dining
- 3/4" x 5" Viking hand scraped hardwood floors in kitchen, great room and study
- 9' pan ceilings & custom trim package with crown moldings, wainscoting & more
- Laundry room conveniently accessible from Master his & hers walk-in closets
- Heated tile floor and shower pan in master bathroom
- Large finished basement with stone wine cellar, pub style bar, and theater room



Take Exit 140 off I-96. Go south on Latson. Turn onto Chilson and head south. Turn right on Timber Green Ct.



810-599-8359
chestnutbuilders.com

Remodel

Redecorate

REFRESH

HINKLEY

gross g electric

Your Lighting & Hardware Design Professionals



www.grosselectric.com

LIVINGSTON DAILY.COM
LIVINGSTON DAILY
PART OF THE USA TODAY NETWORK

Mobile
Social
Desktop

Multi-platform
marketing experts

We combine the largest news and information audience in the state.

We are your one partner with one purpose, to help **YOUR BUSINESS GROW.**

- WEBSITE DESIGN
- SEARCH
- MAPS/REPUTATION
- DIGITAL DISPLAY
- TARGETED DISPLAY
- HIGH IMPACT VIDEO
- PPC
- HOMES
- TARGETED E-MAIL
- SOCIAL MEDIA
- CARS.COM
- PRINT ADS
- SPECIAL PUBS

LIVINGSTON DAILY.COM
LIVINGSTON DAILY
PART OF THE USA TODAY NETWORK

Call today for your FREE Digital Business Analysis 517 548-2000.

We all have unique **MORTGAGE NEEDS**



The State Bank has a solution to fit yours!



Visit Our Brighton Branch to Get Started!
134 North First Street
(810) 534-0800
www.thestatebank.com

The STATE BANK
your financial partner for life

2 Capital Custom Homes - Waverly Woods



3007 WAVERLY WOODS LANE, HOWELL

A beautifully thought-out 2 Story Colonial – Our Durango II is the perfect home for a family of all sizes!

This 2525 sqft, 4 bedroom home welcomes you as soon as you enter. The main entry will lead right into the spacious open kitchen and great room. Our large center island is a great gathering spot and perfect for entertaining. Dramatic stone fireplace for those cool, cozy nights. Lockers in the private mudroom as you enter from the large 24 x 24 truck friendly garage.

No lack of space here! Capital Custom Homes has thought of everything. Tons of closet space, brick/stone exteriors, incredible Superior 9' basement walls with 15 year limited warranty. Energy efficient spray foam insulation, 50 gal. HWH, A/C plus 1 year builder warranty. Home sweet home in this quaint new neighborhood that offers RANCH and colonial plans.

Waverly Woods community is close to shopping, restaurants, parks and only 3 miles to I-96/Latson Rd exchange. This decorated model home and office are open daily or by appointment. Visit our website for more details on home plans and virtual tours visit our website at www.buildwithcapitalhomes.com. Off-site building available.

MAIN FLOOR



SECOND FLOOR



BASEMENT



NOTE: Use 700 N. Eager, Howell for map GPS entry.



Located south of East Highland Road (M-59) on North Eager Road near Chemung Hills Golf Course.



248-595-6719

BuildWithCapitalHomes.com



VIRGINIATILE

virginiatile.com

DETROIT

GRAND RAPIDS

CLEVELAND

CHICAGO



Product shown: Mayfair

Our *Magazine* House

Our House Magazine is the area's ONLY local magazine devoted exclusively to providing news and information to local homeowners about maintaining one of their most important assets—their homes. Editorial features interviews and stories about the home building and home maintenance industry, along with local companies who can provide services and products to assist local homeowners.

Visit:

www.ourhousemagazine.net

For more information send an email to:
Jan or Jim Taylor at
jan@jjadvpub.com - jim@jjadvpub.com



LET US DO THE HEAVY LIFTING.

Insurance doesn't have to be complicated. We'll help you get the right protection at the right price, with the service you deserve.



hylant.com

24 Frank Lloyd Wright Dr., Suite J4100 | Ann Arbor, MI | 734-741-0044
Risk Management | Property & Casualty | Employee Benefits | Personal

Hiring? Looking for Work?

Use Our Job Connection Resources:

- Post Employment Opportunities
- Apply Instantly for a Position
- Post a Resumé

FREE and EASY - No account set-up required.

BRAGAnnArbor.com



734-996-0100
179 Little Lake Drive
Ann Arbor, MI 48103

3 Capital Custom Homes - Walnut Ridge Estates



2171 WALNUT VIEW DRIVE, HARTLAND TOWNSHIP

Walnut Ridge Estates is located in the Hartland School district, this exquisite Augusta model will not disappoint. Start with the wrap-around full front porch that will invite you into this spectacular 2-story foyer. As you walk through to the spacious kitchen, you will notice the impressive 8' island, tons of counter space and large eating nook.

Open concept living will lead you right into the oversized great room. The stone fireplace flanked by bookshelves is perfect for those cozy, cool nights. Nothing lacking in this 2900+ sqft, 4 bedroom home. One look and you'll be in love! Beautiful stone exterior and covered porch with 3 car side entry garage. Hardwood floors, granite countertops throughout, mudroom with lockers are just some of the highlights. Master Suite with amazing master closet and bath with separate tile shower and dual vanities. Additional 3 bedrooms all boast walk-in closets and 2nd floor laundry for convenience. Don't overlook our Superior 9' basements plumbed for future bath with 15 year limited warranty. Energy efficient spray foam insulation, 50 gal. HWH, A/C plus 1 year builder warranty.

Capital Custom Homes is built with quality materials and has outstanding customer service to back it up. Decorated model and office open daily and by appointment. Visit our website for more details on floor plans and virtual tours. www.buildwithcapitalhomes.com. Off-site building available.

NOTE: Use 8457 E. Highland Rd, Howell for map GPS entry.



Located between US-23 and Hacker Road on the North side of M-59 behind Venture Church.



248-595-6719

BuildWithCapitalHomes.com

An independent audit shows that Marketeer readers plan to spend over \$1.5 BILLION on homes and property in the next 12 months!

The Marketeer is used by over 90,000 adult readers in Livingston, North Washtenaw and West Oakland Counties each month to make buying decisions.

How much of that spending would you like to capture to your business? We can bring you an audience that's eager to spend money on what you're selling!

The
Marketeer

Call (810) 227-1575 for advertising assistance
www.marketeer.ws

MANS 1-800-TRY-MANS
www.MansLumber.com

LUMBER • MILLWORK 47255 Michigan Ave. • 3330 W. Jefferson
Canton, MI 48188 Trenton, MI 48183

#1 Trex Dealer In Michigan

No Staining Your Deck... Ever.

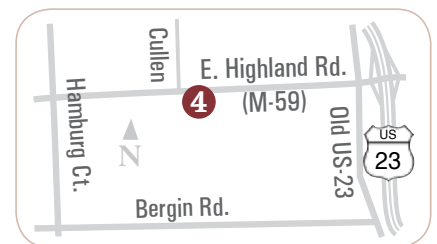
4 Chestnut Home Builders - *Fiddler Grove*



1972 FIDDLER COURT, HARTLAND TOWNSHIP

Steve Gronow and Chestnut Home Builders welcome you to *The Wicklow*. Come visit this thoughtfully designed, elegant home featuring:

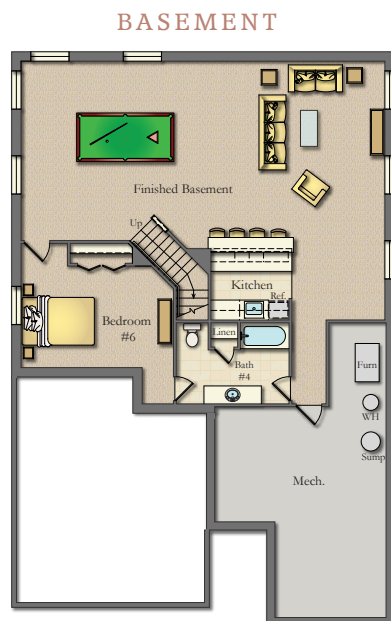
- Maintenance free ranch community
- Stone/brick/siding maintenance free exterior
- 9' ceiling with trim package that includes crown molding, wainscoting & more
- 3/4" x 5" Viking hand scraped hardwood floors in kitchen, great room and study
- Open floor plan with large stone faced island and fireplace
- Large ceramic tile shower surround with granite bench in master bathroom
- Laundry room conveniently located just off the master bath
- 15 year Superior Walls foundation warranty
- Safe room/wine cellar and stone-faced bar in lower level



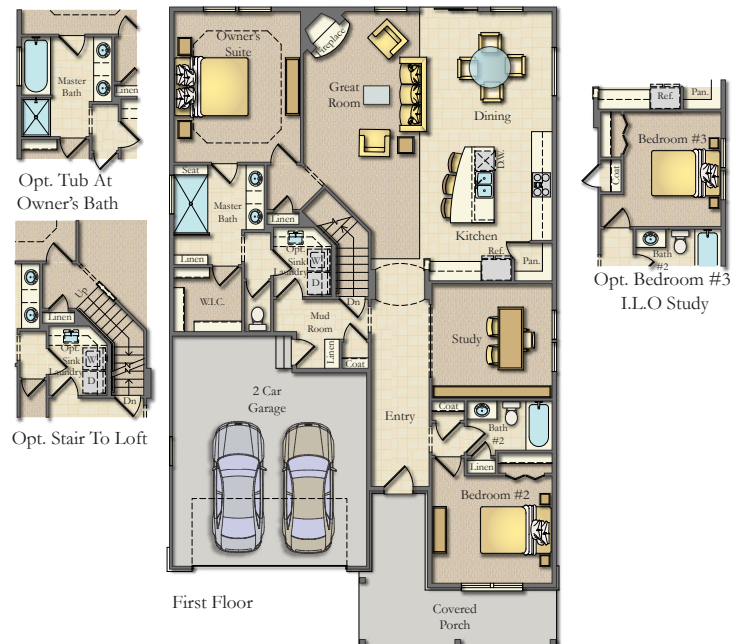
Take exit 67 off US-23 and go west on M-59 for 1.5 miles. The home is on the south side, east of Cullen.



Chestnut
HOME BUILDERS & REAL ESTATE
810-599-8359
chestnutbuilders.com



MAIN FLOOR & OPTIONS



Team up with ANDERSON PAINT COMPANY

We make painting fun!

- We carry the best products on the market, along with the most experienced staff.
- Need help choosing colors? We can do that, too!!

Meet our Hometown Expert.

Gayle Pesek



- BS in Interior Design and a minor in Art
- Anderson Paint Company staff for 10 years
- Residential and commercial experience



ANDERSON
PAINT COMPANY

Hometown Experts. Better Choices.

Local and family owned since 1951.

LONG TERM EXPERIENCED STAFF
OFFERING THE HIGHEST QUALITY PAINTS



Benjamin Moore®

Two Ann Arbor Locations:

2386 W. Stadium Blvd. • Ann Arbor, MI 48103 • 734.995.4411

4573 Washtenaw Ave. • Ann Arbor, MI 48108 • 734.971.0868

www.andersonpaint.com



Find the latest shows, tours and local listings.

VISIT

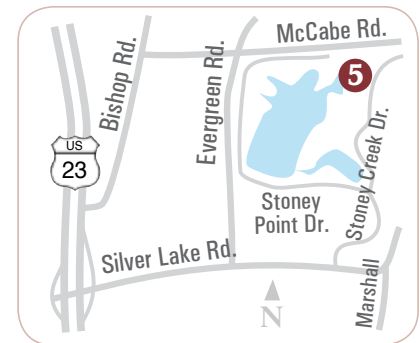
▶ realestate.mlive.com



5 Paul Elkow Building Co., LLC - The Meadows of Hidden Lake



Above: Conceptual rendering.
Example pictured differs from current model.
(Photo not yet available at time of printing)



8350 STONEY CREEK DRIVE, SOUTH LYON

NEW MODEL NOW OPEN

Enjoy a carefree detached villa-style condominium with lake privileges on all sports Hidden Lake. Community features include picturesque gardens, waterfalls, miles of walking trails, an amphitheater and a marina.

Floor plans available to fit any lifestyle ranging from 1,743 sq. ft. – 2,711 sq. ft. Generous use of space, open floor plans, soaring ceilings, walkout & daylight basements. You'll love the bonus of a 3 car garage, deck and landscaping, all included.

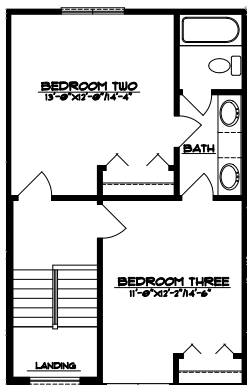
For information on "Model Opening" prices and floor plans, please call or text Diane Braykovich at 248-787-4545 or email dianebraykovich@remax.net.

Exit at Silver Lake Road off US-23. Head east 1.3 miles and turn left on Stoney Creek Drive. Take Stoney Creek Drive to back of the community/end of Stoney Creek.

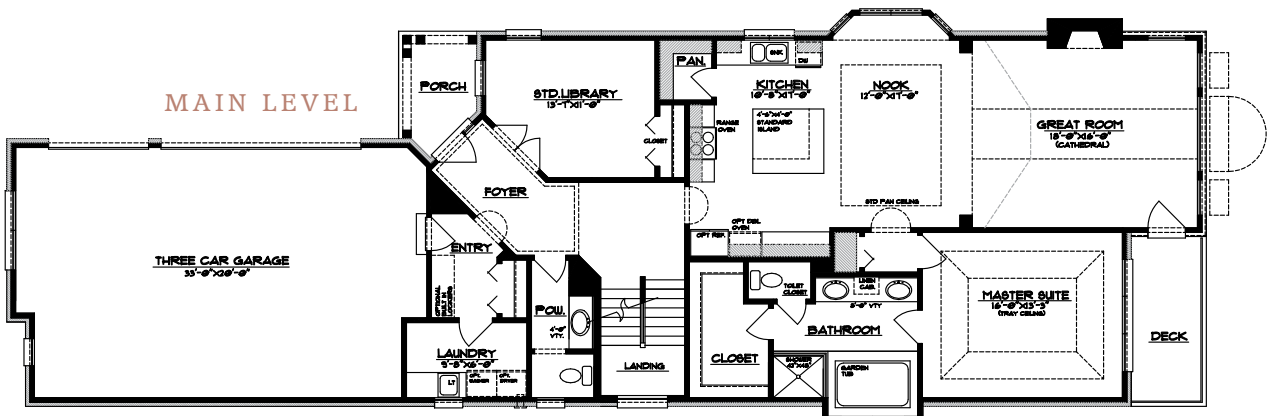


248-787-4545
PaulElkowBuilding.com

UPPER LEVEL

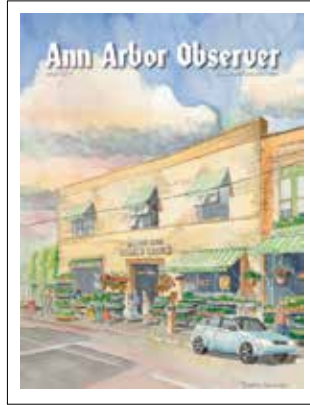
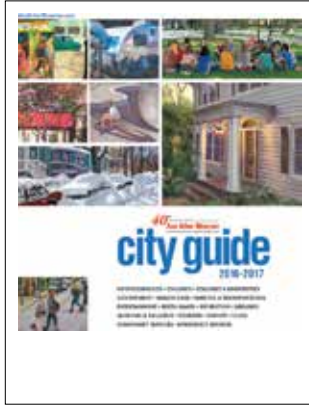


MAIN LEVEL



Home. Work. Play.

We cover it all



Support Quality Local Journalism.

- Advertise in the Observer

Call 734-769-3175 or
email Courtney@aaobserver.com

- Become a Friend

Call, send a check, or click on 'Friends'
at AnnArborObserver.com

Only \$20 per year for a voluntary paid subscription

(If you'd like to give more, we will happily accept it.)

- Connect with us on Facebook
and Twitter @aaobserver

Ann Arbor Observer

2390 Winewood | Ann Arbor | MI | 48103 | 734.769.3175 | AnnArborObserver.com  

HunterDouglas Gallery[®]



AREA'S LARGEST SELECTION OF WALLPAPER

Multi-purpose Fabrics - Slipcovers - Custom Bedding - Accent Pillows



Vignette® Modern Roman Shades



Skyline® Gliding Window Panels

SO MUCH MORE THAN DRAPERIES & BLINDS!

FREE DESIGN SERVICES

In Our Hunter Douglas Gallery Showroom or Your Home



Custom Furniture - Area Rugs - Home Décor Items

WALLPAPER · UPHOLSTERY · BEDDING · CORNICES · DRAPERIES · VALANCES · FABRICS · SLIPCOVERS

2215 W. Stadium Blvd. Ann Arbor, MI 48103 · M - F: 9-5:30 | Sat: 9 - 2

(734)662-6524 · www.deluxdrapery.com

6 Guenther Building Company - Hartman Farms

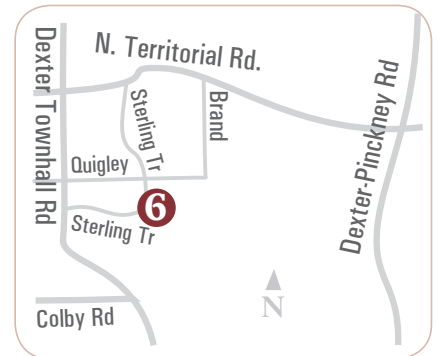


5816 STERLING TRAIL, DEXTER TOWNSHIP, 48130

The LaGrande by Guenther Homes is one of our most popular floor plans and it's easy to see why! Let's just say "You have to see this master bathroom!" Walk through shower with a jetted tub and double vanities. A HUGE walk-in closet. Also featuring a guest room with private bath and walk-in closet as well as a Jack and Jill bath for the remaining two bedrooms. Two story foyer with bridge across. Finished walkout basement with two more bedrooms and a full bath! Much, much more!

The newly decorated LaGrande Model Home features:

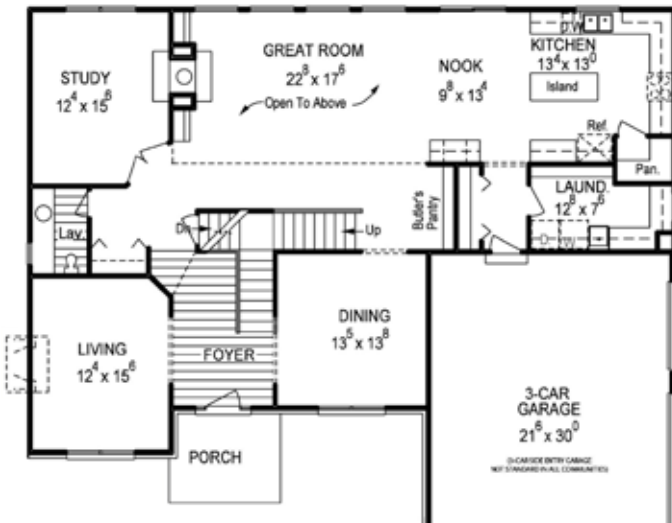
- 3450 Square feet plus finished walkout basement
- 6 bedrooms
- 4.5 bathrooms
- Gourmet Kitchen
- Granite countertops
- Gorgeous hardwood and tile flooring
- Amazing master suite with walk-through spa shower



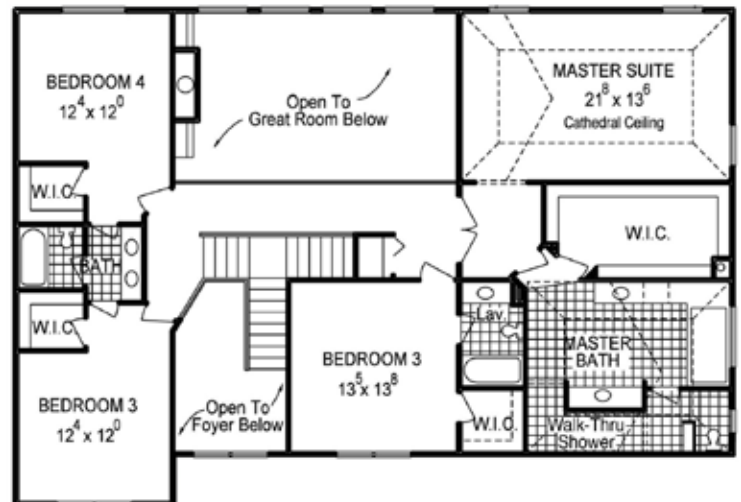
734-260-2119
GuentherHomes.com

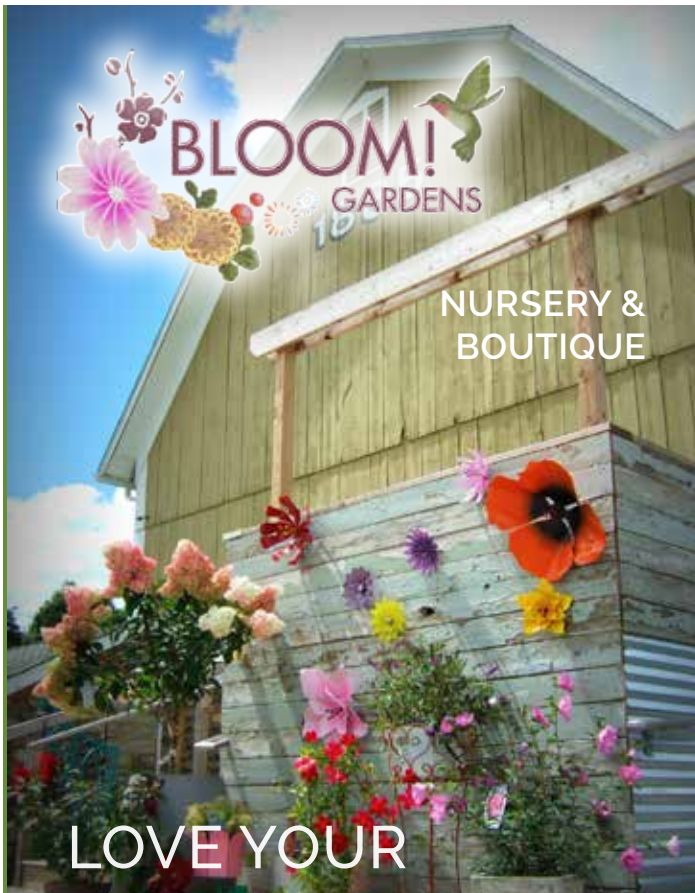
Sterling Trail is off Dexter Townhall Road just south of North Territorial Road. The major cross streets are Dexter Townhall Road and Dexter-Pinckney Road.

LaGRANDE - FIRST FLOOR



LaGRANDE - SECOND FLOOR





LOVE YOUR LANDSCAPE



1885 BAKER RD. DEXTER, MI 48130 734-426-6600
 WWW.LOTUSGARDENSCAPES.COM

Stop in and see all the possibilities for your home.



WASHTENAW DOOR & TRIM
 • ESTABLISHED 1974 •

Serving Homeowner & Contractors Needs Since 1974



See our products at Home #6, #7, #10, #12 and #13

Visit our showroom at 2502 E. Michigan Ave. in Ypsilanti

We represent these major brands:
 Emtek • Jeld-Wen • Lemieux • Merrie
 Schlage • Signamark • ThermaThru • TruStile

www.washtenawdoor.com 734-484-1250



We've helped beautify homes for more than two decades!

- Custom Shower Doors
- Mirrors
- Table Tops
- Storm Doors & Screens
- Mirrored Closet Doors
- Plexi & Safety Glass
- Insulated Units
- Staircase & Deck Railing
- Obscure & Pattern Glass
- Custom Etching

Whether you're starting a remodeling project or a new home, contact us for all your glass needs. To help you get started, visit our showroom or website for ideas.

From standard to custom...we're the clear choice™ for all your glass projects!

Wolverine Moore Glass, Inc.
 The Clear Choice™

Visit our showroom today!

1072 Baker Road, Dexter (enter off Marshall Rd.)

www.wmglass.com

734.426.5600

7 Norfolk Homes - *Castleton Farms*



11475 CASTLETON COURT, DEXTER TOWNSHIP

- 2987 Square Feet, 4 Bedrooms 3.5 Baths, 3 Car Side Entry Garage
- Custom Designed with Craftsman Details Throughout the Home
- Gourmet Kitchen with Granite, Tiled Backsplash and Stainless Steel Appliances
- Light Filled Great Room with 11' Ceiling Height and Stone Fireplace
- Enjoy Casual Family Dining in the Sunroom
- Spacious Master Suite w/ Luxurious Tiled Shower, Soaking Tub & Walk-in Closet
- Step-up Bedroom with Private Bath Works Well as Guest Accommodations
- First Floor Flex Space Provides for a Home Office or Formal Dining Room



ABOUT THE BUILDER

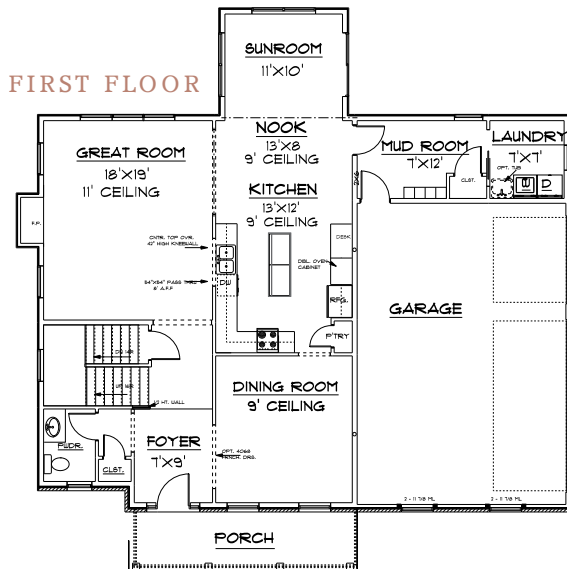
Celebrating our 25th Anniversary, Norfolk Homes was founded with one goal in mind, to build beautiful distinctive homes with character. We know that building a home for someone is both a privilege and a responsibility. Your dream matters to us so we listen and keep listening as we put together an expert team of craft builders, tradespeople and custom finishers. Your home is more than just a financial investment or a place to hang your hat. We believe your home is an intricate part of who you are.

From North Territorial, turn left onto Dexter Townhall Rd., heading south. Turn left on Castleton Court. The home is on the right-hand side.

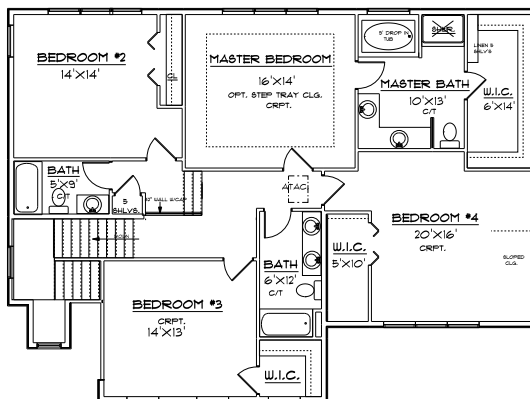


734-408-0777

www.Norfolk-Homes.com



SECOND FLOOR



1.800.566.6626 *Rely on us to be your one-stop septic shop!*

JIM KOVALAK
Excavating & Septic Tank Cleaning

Over 40 Years of Experience • Family Owned and Operated



Call us at 1.800.566.6626 (734.461.6838 local) or visit our website at www.kovalakseptic.com

Receive \$10.00 off any service with this coupon!
Not to be combined with any other offer. Limit 1 coupon per customer.

- Septic Tank Cleaning & Pumping
- Well & Septic Inspections
- Drain Field Repairs & Installations
- Home & Sewer Snaking, Jetting & Repairs
- Bull Dozing, Grading & Driveways
- Sump & Sewage Ejection Pumps
- Full Excavating Service
- Bulk Discounts for Subs

LICENSED & INSURED

DEXTER

CABINET & COUNTERTOP

734-426-5035

1084 Baker Road, Dexter, MI 48130

Check out our new website www.dextercabinet.com

"My prescription for a comfortable home!"

FRESHSTART™
The Ultimate Insulation Makeover

- 1 REMOVE**
your attic nasties, safely and cleanly
- 2 AIR-SEAL**
and ventilate your attic correctly
- 3 RE-INSULATE**
for performance and savings



Arbor Insulation
Your Green Building Experts

734-786-1664
arborinsulation.com

Thank you to Meadowlark Builders for insulating home #8 with Arbor Insulation



UNIVERSITY OF MICHIGAN CREDIT UNION

Whether you are buying a new home or remodeling your current home, let the only locally based credit union in Ann Arbor help you with your mortgage and home equities!

Visit UMCU.ORG



8 Meadowlark Design+Build



18880 NORTH TERRITORIAL ROAD, CHELSEA *Red Pine Lodge*

Dreaming of a rustic hunting lodge in the woods that was quiet, yet close enough to their beloved alma mater, our clients have arrived at a place that we call Red Pine Lodge.

Designed by architect Ed Kriskywicz with interior design and construction by Meadowlark, this model of green construction was designed and built to be durable, comfortable and highly efficient. A beautiful view through the trees overlooking the Waterloo Recreation Area awaits you on the screened porch complete with an outdoor kitchen and beautiful stone fireplace.

Our team married the feel of log construction with refined elements that give the home a softer, modern touch. Clients, designers and architects worked together in a fun collaborative to blend strong aesthetic preferences into harmonious balance.

Trees that were felled at the edge of the treeline were sawn locally and turned into trim, flooring, ceiling and wall paneling, railings and furniture in the home. 65 red pine logs frame the structure of the home, while a mix of woods – oak, elm, white pine, poplar and cherry blend seamlessly to create a clean, yet rustic appeal.

ABOUT MEADOWLARK DESIGN+BUILD

Meadowlark Design+Build combines architectural design with the best in building construction to create quality homes and remodels that are healthy, comfortable and energy-efficient. Based in Ann Arbor, we are a nationally recognized design-build firm with extensive experience in advanced green building systems. On time and on budget, our work is backed up with a three-year bumper-to-bumper warranty and our promise of quality at a fair price.



From North Ann Arbor: Take North Territorial west past Island Lake Road. The home is on the north side.

From I-94: Take I-94 west to M-52 (Stockbridge Chelsea Road). Go through downtown Chelsea and proceed to North Territorial Road. Turn right onto North Territorial. The home is on the north side.



734-332-1500
www.MeadowlarkDB.com

HOWARD HANNA PRESENTS

TWO REMARKABLE BUILDING SITES



0 Geddes Road

4.66 acres \$1.5 million
 Wooded lot with 460' of Huron River frontage.
 Exquisite lot for your custom dream home.

Contact: Ann Walton (734) 476-7175

3355 Geddes Road

1.1 acres \$400,000
 Overlooks Gallup Park and the Huron River.
 Can be divided into two lots.

Contact: Dan Carroll (734) 972-8933

1898 W. Stadium Blvd.
 Ann Arbor, MI 48103



Big Georges

HOME APPLIANCE MART



KITCHEN APPLIANCES - MATTRESSES - HOME THEATER - FIREPLACES - LAUNDRY

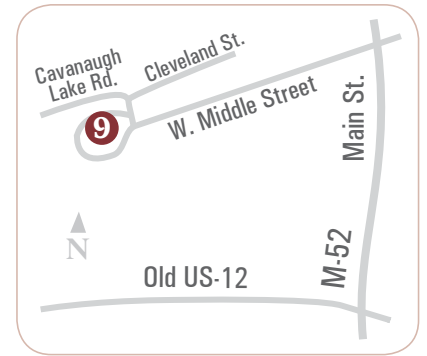
KitchenAid



Receive up to a \$1600 mail-in rebate with purchase of select KitchenAid appliances.

2023 W. STADIUM BLVD. ANN ARBOR MI • 734.669.9500 • www.big-georges.com
 6551 ORCHARD LAKE ROAD WEST BLOOMFIELD MI • 248.932.0870

9 United Methodist Retirement Communities & Peters Building Company - *The Prairie Cottages*



805 WEST MIDDLE STREET, CHELSEA

From Main Street in Chelsea, turn onto W. Middle Street. Follow the signs to our model. It is located on the right-hand side, address #805.

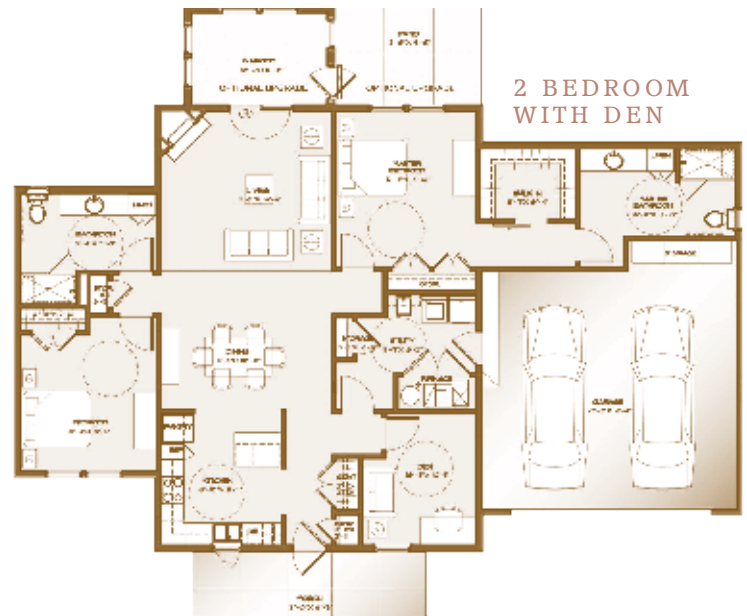
With its abundant lifestyle options, close proximity to downtown Chelsea and Ann Arbor, Chelsea Retirement Community is a great place to call home. The Prairie Cottages offers residents the perfect balance between an independent lifestyle and maintenance free living. We're building a community where opportunities abound for those seeking an enriching, fulfilling, and active lifestyle.

Cottage Features

- Spacious One & Two Bedroom Floor Plans
- Sunrooms and Private Rooms
- Cozy Dens
- One & Two Car Attached Garages
- High End Fixtures and Appliances
- Thoughtfully Designed, Private Homes & Neighborhood
- Convenient Life Lease Fee Structure

Community Amenities

- Maintenance Free Living
- Delicious, Award Winning Dining
- Dynamic Programs
- Exciting Social Events
- Full Continuum of Care (Should you need it)
- Close Proximity to Downtown Chelsea & Ann Arbor



734-433-1000
UMRC.com



Made in Michigan – Made for You.

Get your next hardscape project off to a colorful start by choosing Fendt – the supplier for Michigan landscape contractors and dealers. Infuse your new landscape with color by using our vivid brick pavers. If you can't find the perfect shade, we'll create one for you.

All Fendt products are made in Michigan, just for you. With 92 years' experience, you can count on Fendt for quality products.

Dream in color and Fendt will make it a reality.



22005 Gill Rd. / Farmington Hills, MI 48335 / (248) 474-3211
3285 W. Liberty / Ann Arbor, MI 48103 / (734) 663-4277
fendtproducts.com



10 Ann Arbor Student Building Industry Program - Kirkway of Scio



Rendering may differ from completed home.

348 SEDGEWOOD LANE, ANN ARBOR

This year, the Ann Arbor Student Home Building Industry Program will celebrate completion of its 47th new home.

With the hard work of our dedicated students, support of local builders, contractors and related industry professionals this new home is now complete in a brand new location on the west side of Ann Arbor in the Kirkway Of Scio development.

The attractive façade features brick accents and a covered front porch with a metal roof. The 2,400 sq. ft. interior greets you with bright spacious rooms featuring nine foot ceilings, an abundant amount of biscuit painted kitchen cabinets, stainless steel appliances, granite counters and oak hardwood floors throughout the entire first floor. The kitchen island offers a central gathering space with a snack bar. A corner gas fireplace in the great room is surrounded with a brick shaped tiles. A formal dining room could easily be a flexible study.

The spacious master suite on the second floor, features a cathedral ceiling and a huge master bath with double tiled shower and a cherry vanity with granite counter. An additional 1,000 sq. ft. are found in the finished walk out lower level with family room, study or 5th bedroom, a full bath and lots of natural light.

A first floor laundry with tiled floor and guest bath are located in the rear entry close to the entrance of the attached 2 1/2 car garage. A fully landscaped site includes underground sprinklers and a spacious 16' x 12' deck for entertaining.

Kirkway of Scio will become the home of the Ann Arbor Student Home Building Industry for the next 7 years, building one house per year to complete this family neighborhood.



From I-94: Take I-94 west to the Zeeb Road exit. Go west on Jackson Road to Staebler Road. Turn left on Staebler Road. Turn right onto Sedgewood Lane. The home will be on the right-hand side.



**The Ann Arbor Student
Building Industry Program**
Established 1970

734-996-0100
AASStudentBuilding.org

Living Building Challenge...

Challenge Accepted!

Fireside Home Construction is proud to have been the General Contractor for this sustainable dwelling, Burr Becc at Beacon Springs. For more information about this incredible home, visit www.beaconsprings.org

We are in the audit period to be certified as only the **2nd Living Building Challenge residence in the world.** **We will also receive a coveted LEED Platinum Certification.** Come see what the latest technology can do in terms of Net Zero Energy, Solar Power, Rain Water Reuse for the home, Geo Thermal, Passive Solar with Trombe walls, stringent material selection requirements... and the list goes on.

Please contact us to see how Fireside Home Construction can help with your new home or renovation project!



New Home Construction • Remodeling • Light Commercial

734-426-4353

FiresideHomeConstruction.com

11

Architectural Resource and Fireside Home Construction



3200 TESSMER, ANN ARBOR *Burh Becc at Beacon Springs*

Architectural Resource and Fireside Home Construction are extremely pleased to share with you a very special home, indeed potentially an history making home: Burh Becc at Beacon Springs. This ultra-green, new home project is registered with the International Living Futures Institute's Living Building Challenge (LBC) program with the ambitious goal of Full Certification. Burh Becc is on track to be potentially the second home in the world to be achieve the level of Full Certification. The Living Building Challenge has been described as the 'Holy Grail' of Green building systems - the world's most demanding and rigorous program for Green certification. Come see world-class, cutting-edge, sustainability right here in your own back yard and take away inspiration for your own new home project!

ABOUT THE ARCHITECT

Architectural Resource, headed by Michael Klement, AIA, is a nationally recognized, award-winning, Ann Arbor-based architectural firm specializing exclusively in the design of new homes, cottages, additions, remodels, and renovations. Since 1991, creating beautiful homes for our clients that are sustainable and energy efficient has been the heartbeat of our mission. www.architecturalresource.com

ABOUT THE BUILDER

Fireside Home Construction specializes in building beautiful and efficient homes driven by our customer's wants and needs. Since 1996, Fireside Home Construction's mission to provide clients with innovative and high-quality home construction and renovation services has resulted in numerous homebuilding awards, much praise and a reputation for building every project as if it were our own.



From the north: Take Wagner Road south to Waters Road and turn right. Turn left onto Tessmer.

From the east: Take Ann Arbor Saline Road heading north and keep left at the split onto Wagner Road. Take Wagner Road north, and turn left onto Waters Road. Turn left onto Tessmer.



734-769-9784

ArchitecturalResource.com



734-426-4353

FiresideHomeConstruction.com

IDC

HEATING & COOLING

FAST, FRIENDLY HVAC SERVICES!

HVAC service appointment
Call IDC to schedule your next

idc-hvac.com
734-727-0223

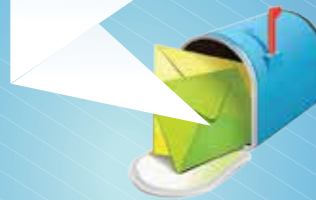
Licensed and Insured · Serving Southeast Michigan Since 1990



THE SUN TIMES NEWS

IS THE ONLY **FREE** MAILED NEWSPAPER
REACHING OVER 26,000 ADDRESSES IN
THE SURROUNDING COMMUNITIES OF
ANN ARBOR, CHELSEA, DEXTER, SALINE,
MANCHESTER, AND STOCKBRIDGE

WITH NEWS,
EVENTS, SPORTS,
AND THE BEST
IN LOCAL
ADVERTISING



(734) 562-2325
or (734) 648-0837

Call to advertise
or share your news

or email:
advertising@thesuntimesnews.com

LIVE LARGER WITH NATURAL GAS.

Expand your space with more outdoor living, courtesy of natural gas. Not only can you cook with it, you can create a warm, relaxing outside living room. Just hook up a pool and spa heater, then fire up the grill. So explore the possibilities.

Take a tour of our interactive home at dteenergy.com/gashouse.



DTE Energy
Know Your Own Power®



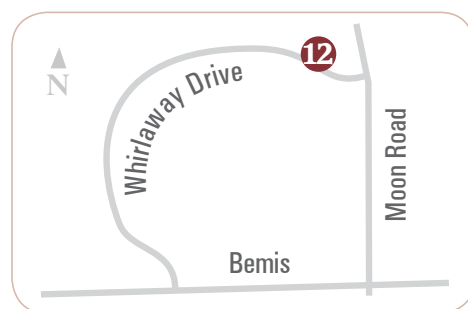
12 Guenther Building Company - Thistle Down Farms



7670 WHIRLWAY DRIVE, SALINE 48176

The Savoy by Guenther homes is a breathtaking floor plan with unexpected features at every turn. Spectacular triangular kitchen sink area with double windows pours sunlight into the kitchen. The raised snack bar gives room to gather around while preparing meals or snacking with the kids. Two story great room with a wall of windows brings the outside in! Separate leisure room offers "get away space" or the perfect music room. The split staircase and grand foyer welcomes you in, then walk up the stairs and across the second story bridge to the bedrooms all with direct access to private baths. The one of a kind master suite has a second story deck, huge walk-in closet and ceramic tile walk through shower. A must see home!

- Features include:
- Dynamic Kitchen
 - Expansive Great Room
 - Bridge to Master Suite
 - Double Stair Case
 - Master With Walk-through Shower
 - 2-Level Deck
 - Finished Walk-Out Basement
 - 4,350 sq. ft plus 1,100 in Lower Level
 - 6 Bedrooms, 4.5 Baths

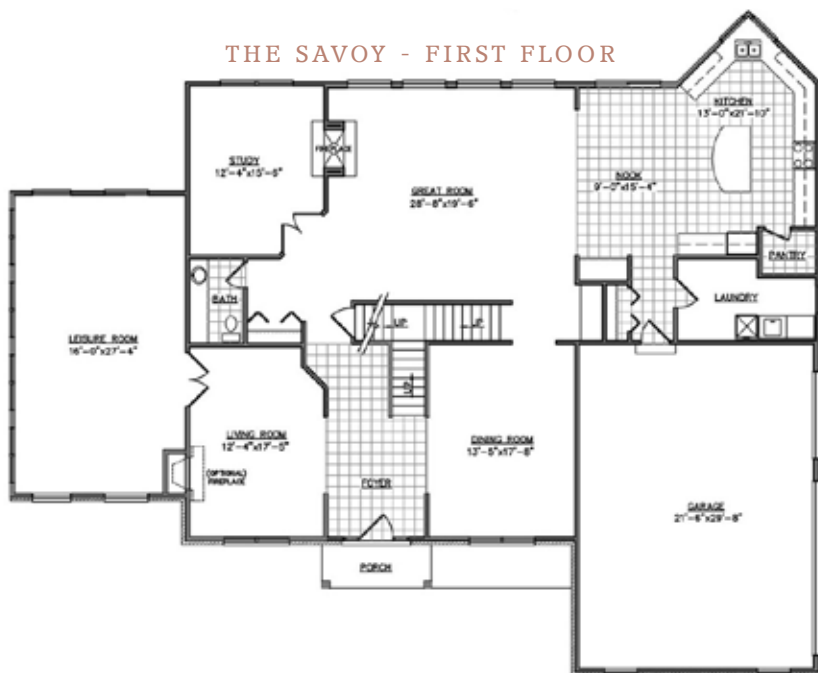


From Ann Arbor, take State Street heading south. State Street becomes Moon Road. Whirlway Drive will be on your right side, west of Moon Road.

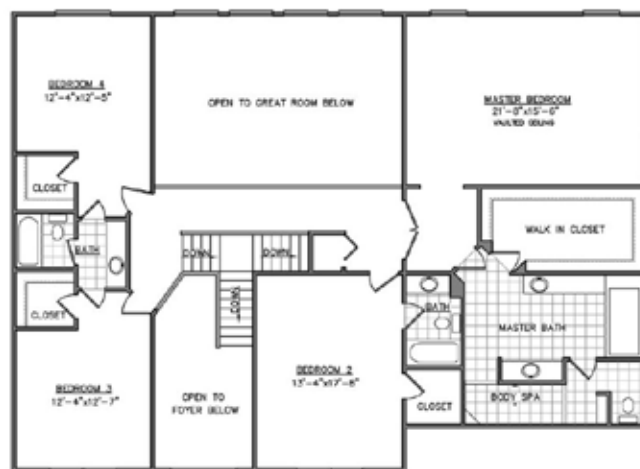


734-260-2119
GuentherHomes.com

THE SAVOY - FIRST FLOOR



THE SAVOY - SECOND FLOOR



Ready for an update?



Builders Plumbing & Heating Supply

Plumbing & HVAC • Bath & Kitchen

2464 S. Industrial Hwy
Ann Arbor, MI 48104
734-668-8200

700 S. Hosmer
Lansing, MI 48912
517-485-7219

3305 Centennial
Midland, MI 48642
989-496-3113

TO LEARN MORE VISIT: <http://builders.crawfordsupply.com/paradeofhomes>

CALL TODAY!

Appointments recommended.

www.buildersplumbingsupply.com

THE BOLD LOOK
OF **KOHLER**®

Tour Stunning Remodeled Homes and Inspire Your Improvements!

Save the dates!

**REMODELERS
HOME TOUR**

October 14 & 15

Sat: 11 - 6 | Sun: 12 - 6

View archived tour homes, stream interviews with the designers and remodelers and more online. Join our email list for reminders and a chance to win a free pair of tickets.



734-996-0100 | BRAGAnnArbor.com



PICTURED: REMODELER: D. A. HAIG CONSTRUCTION PHOTO: JEN PATSELAS PHOTOGRAPHY

13 Guenther Building Company - Saline Valley Farms



10308 COBB HOLLOW FARM ROAD, SALINE 48176

The Richmond Deluxe by Guenther Homes is the home with everything you need! Flowing floor plan leads from the kitchen to the two story great room. Perfect for the large family with a private study, formal dining room and formal living room. On the second floor, the bridge leads you to the private master suite with beautiful ceramic tile, shower and jetted tub. There is a guest room with private bath and walk-in closet as well as a Jack and Jill bath for the remaining two bedrooms. Much, much more!

- Features include:
- Dynamic Kitchen
 - Two Story Great Room & Front Entry
 - Bridge to Master Suite
 - Jack 'n' Jill bathroom
 - Princess Suite or guest bed and bath
 - Office w/ built-in book shelves
 - Huge laundry room
 - 2950 sq. ft.
 - 4 Bedrooms, 3.5 Baths



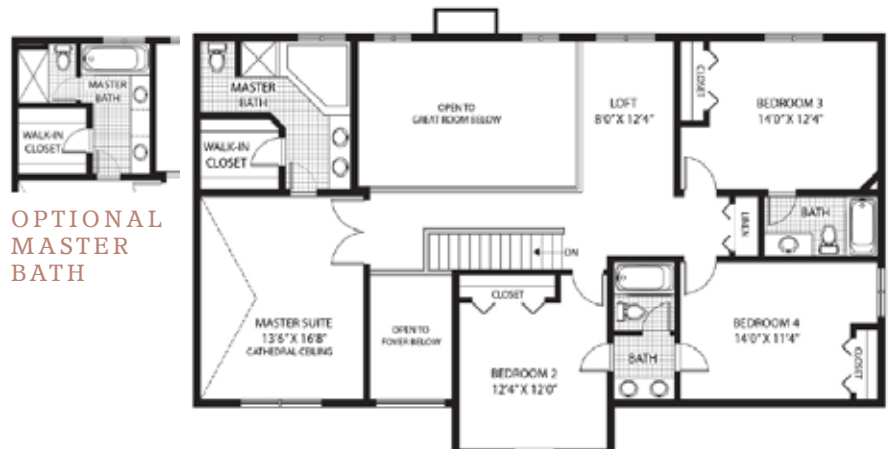
734-260-2119
GuentherHomes.com

From downtown Saline, go south on Saline-Milan Road. Turn right onto Milkey Road. Turn left onto Ella Lee Road. Turn right onto Cobb Hollow Farm Rd.

THE RICHMOND DELUXE
FIRST FLOOR



THE RICHMOND DELUXE
SECOND FLOOR



OPTIONAL
MASTER
BATH



Around the Home

ON 1290 AM WLBY RADIO

Lively discussion with local builders and home improvement experts!

Thursdays at 8:50 AM & 10:50 AM, Saturdays 9:50 AM
Around the Home Weekend: Sundays 11:00 AM to 12:00 PM

Tune in to 1290 AM, listen live and stream archives at
www.LucyAnnLance.com



In Partnership with



MAKE YOUR EVENT EXTRAORDINARY AT THE BRAG ANN ARBOR EVENT CENTER & CONFERENCE ROOM



Visit BRAGAnnArbor.com for pricing and details.

The BRAG Ann Arbor Event Center hosts:

- Business Meetings, Seminars, Holiday Parties
- Wedding Receptions, Rehearsal Dinners, etc.
- Catered Events, Graduation Parties, and more

The Event Center is located on our lower walk-out floor. 98 person capacity. Includes fridge, 86 chairs, 20 classroom tables and 8 pillar tables.

The Conference Room is great for:

- Training and planning sessions, presentations
- 20 person max. w/ mini-fridge & presentation aids.



The Builders and Remodelers Association of Greater Ann Arbor
179 Little Lake Dr., Ann Arbor

Book your event with Andrea Sullivan by phone at 734-996-0100 or email asullivan@BRAGAnnArbor.com

14 South & West Washtenaw Consortium Student Building Trades Program - *Saline Valley Farms*



10341 COBB HOLLOW FARM LANE, SALINE

ABOUT THE HOME

- Saline Valley Farms Subdivision
- Three-Car Garage
- Second-Floor Laundry
- Granite Counter Tops
- Ceramic Tile in Bathrooms
- Walk-In Shower in the Master Bath
- Gas Fireplace
- Bear Lodge Plank Hardwood Floors
- 4 Bedrooms, 3.5 Baths
- 2,950 Square Feet

ABOUT THE SWWC STUDENT BUILDING TRADES PROGRAM

The Building Trades program prepares a student for employment in the construction industry. There is much for the student to learn in the field, and the immense diversity of career opportunities makes this industry one of the most interesting and challenging.

The Building Trades class prepares the student with entry level skills needed for employment through the actual construction of a house.

The specific areas of study include: site preparation, dry wall, masonry, finish carpentry, rough carpentry, painting and wall covering, heating, plumbing, construction technique, wiring, insulation, management skills, and employability skills.

A solid foundation in math skills are needed, geometry is recommended. Articulation is available with Washtenaw Community College.



From downtown Saline, go south on Saline-Milan Road. Turn right onto Milkey Road. Turn left onto Ella Lee Road. Turn right onto Cobb Hollow Farm Lane.



734-429-8061

salineschools.org/schools/swwc/



GRACEFUL + DURABLE

Whether remodeling, adding on, or building new, count on Meadowlark for inspired architectural designs, unparalleled craftsmanship and a personalized customer experience. On time and on budget, we set the standard in residential construction. Let us craft a home that is distinctively yours.



INNOVATIVE DESIGN+BUILD • MEADOWLARKDB.COM

Welcome!



At Absolute Title, we take care of the details of your closing so you can focus on the exciting, fun aspects of buying or building your home.

Enjoy the Parade of Homes!

Proudly Sponsored by Absolute Title, Inc.

2875 W. Liberty Rd., Ann Arbor, MI 48103
734-662-1050 | Fax: 734-662-3608 | AbsoluteTitleinc.com

BUILDERS WHO CAN CHOOSE ANY WINDOW **DON'T JUST CHOOSE ANY WINDOW.**



**400
SERIES**

With a classic blend of engineering and craftsmanship, time-tested 400 Series products offer the beauty, performance and durability you've always wanted. So when you're building a home, trust the windows and patio doors builders trust most — Andersen® windows and doors. **Why choose anything else?**



WINDOWS • DOORS
Andersen 

"ENERGY STAR" is a registered trademark of the U.S. Environmental Protection Agency.
"Andersen" and all other marks where denoted are trademarks of Andersen Corporation. ©2017 Andersen Corporation. All rights reserved. MS170X_XXXX

 **Michigan
Window & Door**

10760 Hi Tech Drive Whitmore Lake, MI 48189

734.449.9150

michiganwindow.com

*Contact Us For All your Window and Door Needs.
Michigan Window & Door,
an Andersen Platinum Dealer.*