

6 Guenther Building Company - Hartman Farms

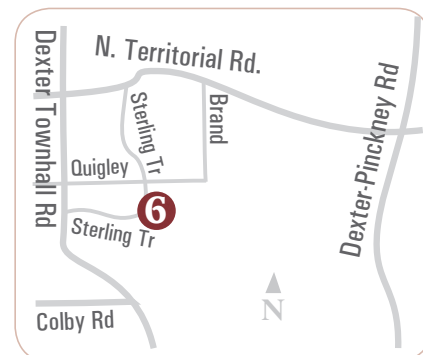


5816 STERLING TRAIL, DEXTER TOWNSHIP, 48130

The LaGrande by Guenther Homes is one of our most popular floor plans and it's easy to see why! Let's just say "You have to see this master bathroom!" Walk through shower with a jetted tub and double vanities. A HUGE walk-in closet. Also featuring a guest room with private bath and walk-in closet as well as a Jack and Jill bath for the remaining two bedrooms. Two story foyer with bridge across. Finished walkout basement with two more bedrooms and a full bath! Much, much more!

The newly decorated LaGrande Model Home features:

- 3450 Square feet plus finished walkout basement
- 6 bedrooms
- 4.5 bathrooms
- Gourmet Kitchen
- Granite countertops
- Gorgeous hardwood and tile flooring
- Amazing master suite with walk-through spa shower

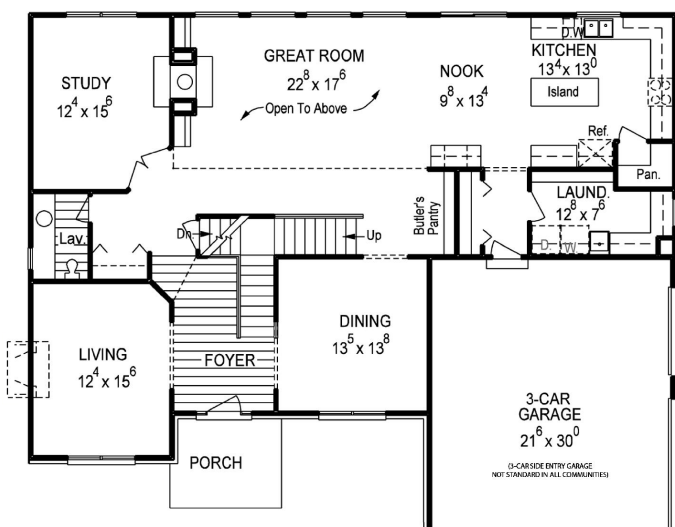


Guenther Homes

734-260-2119
GuentherHomes.com

Sterling Trail is off Dexter Townhall Road just south of North Territorial Road. The major cross streets are Dexter Townhall Road and Dexter-Pinckney Road.

LaGRANDE - FIRST FLOOR



LaGRANDE - SECOND FLOOR

