

2 Capital Custom Homes - Waverly Woods



3007 WAVERLY WOODS LANE, HOWELL

A beautifully thought-out 2 Story Colonial – Our Durango II is the perfect home for a family of all sizes!

This 2525 sqft, 4 bedroom home welcomes you as soon as you enter. The main entry will lead right into the spacious open kitchen and great room. Our large center island is a great gathering spot and perfect for entertaining. Dramatic stone fireplace for those cool, cozy nights. Lockers in the private mudroom as you enter from the large 24 x 24 truck friendly garage.

No lack of space here! Capital Custom Homes has thought of everything. Tons of closet space, brick/stone exteriors, incredible Superior 9' basement walls with 15 year limited warranty. Energy efficient spray foam insulation, 50 gal. HWH, A/C plus 1 year builder warranty. Home sweet home in this quaint new neighborhood that offers RANCH and colonial plans.

Waverly Woods community is close to shopping, restaurants, parks and only 3 miles to I-96/Latson Rd exchange. This decorated model home and office are open daily or by appointment. Visit our website for more details on home plans and virtual tours visit our website at www.buildwithcapitalhomes.com. Off-site building available.

NOTE: Use 700 N. Eager, Howell for map GPS entry.



Located south of East Highland Road (M-59) on North Eager Road near Chemung Hills Golf Course.



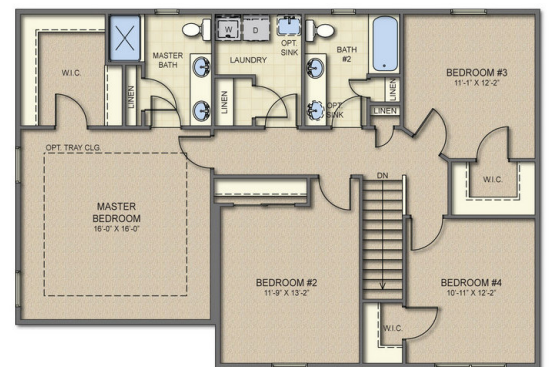
248-595-6719

BuildWithCapitalHomes.com

MAIN FLOOR



SECOND FLOOR



BASEMENT

