

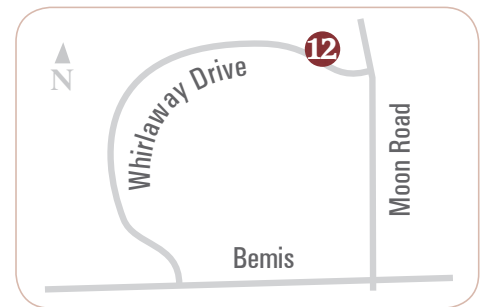
# 12 Guenther Building Company - *Thistle Down Farms*



7670 WHIRLAWAY DRIVE, SALINE 48176

The Savoy by Guenther homes is a breathtaking floor plan with unexpected features at every turn. Spectacular triangular kitchen sink area with double windows pours sunlight into the kitchen. The raised snack bar gives room to gather around while preparing meals or snacking with the kids. Two story great room with a wall of windows brings the outside in! Separate leisure room offers "get away space" or the perfect music room. The split staircase and grand foyer welcomes you in, then walk up the stairs and across the second story bridge to the bedrooms all with direct access to private baths. The one of a kind master suite has a second story deck, huge walk-in closet and ceramic tile walk through shower. A must see home!

- |                          |  |
|--------------------------|--|
| Features include:        | · Master With Walk-through Shower        |
| · Dynamic Kitchen        | · 2-Level Deck                           |
| · Expansive Great Room   | · Finished Walk-Out Basement             |
| · Bridge to Master Suite | · 4,350 sq. ft plus 1,100 in Lower Level |
| · Double Stair Case      | · 6 Bedrooms, 4.5 Baths                  |

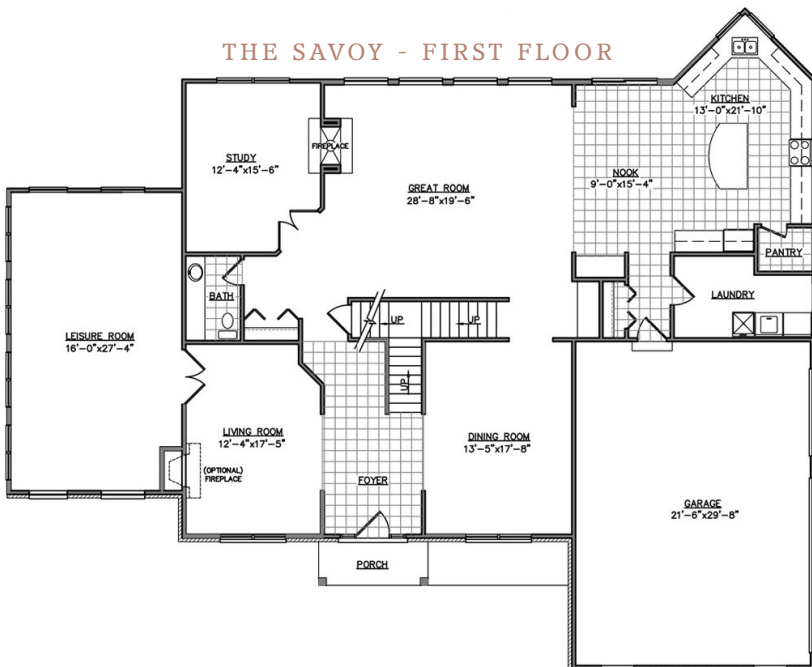


*From Ann Arbor, take State Street heading south. State Street becomes Moon Road. Whirlaway Drive will be on your right side, west of Moon Road.*

**Guenther  
Homes**

734-260-2119  
GuentherHomes.com

THE SAVOY - FIRST FLOOR



THE SAVOY - SECOND FLOOR

