

# MEADOWLARK DESIGN + BUILD

7

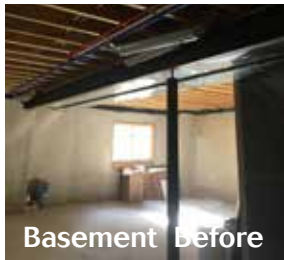
## Whole House Remodel with Build-out of New Master Suite



Bedroom Before



Bathroom Before



Basement Before



## 414 Felch Street, Ann Arbor

### Water Hill Wonder

Nestled on a Hillside in the Water Hill neighborhood, this home had the location (they love to walk downtown) and space that our clients were looking for. Although relatively new construction, our clients wanted to put their mark on the home and complete the unfinished spaces and to make the home work better for their needs. This included a customized architectural design for the basement and attic space above the garage.

They also wanted to give this spec home the character that can only be found through custom craftsmanship. The result is a stunning new master suite over the garage that is quiet and private, and a warm finished basement that accommodates relaxed living (to watch Michigan football and basketball games) and a dedicated space for the homeowner's love of arts and crafts. Finally to top it all off - custom features added throughout the home have turned it from standard to stunning!

Our clients worked with Betty Swenson at Ethan Allen Furniture to come up with furniture and art that not only reflect their personal style, but also complement Meadowlark's design.

### About Meadowlark Design+Build

Meadowlark Design+Build is an award-winning full-service residential contractor. With a talented design staff of architects and design professionals, we produce inspired designs in-house, as well as collaborating seamlessly with the area's best architects.

No design-build company is complete without a construction department, and Meadowlark's is one of the best. Our own field crews, 28 strong, make designs come alive with an expertise that only in-house craftsmen can possess. On time and on budget, our work is backed up with a complete three-year warranty. Make your house a Meadowlark home!



From Miller: Turn north on Spring. Then right (east) on Felch. Home is on the left-hand side.

From Main: West on Felch. Home is on the right-hand side, just west of the railroad overpass.



734-332-1500

[www.MeadowlarkBuilders.com](http://www.MeadowlarkBuilders.com)